

Specifications:

Contact Resistance: 30mΩ max at DC 100 mA

Insulator Resistance: 1000MΩ min. at DC 500V

Current Rating: 5 AMP

Dielectric Withstanding

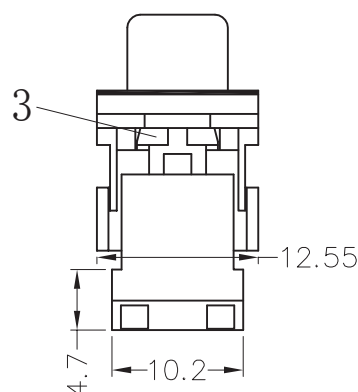
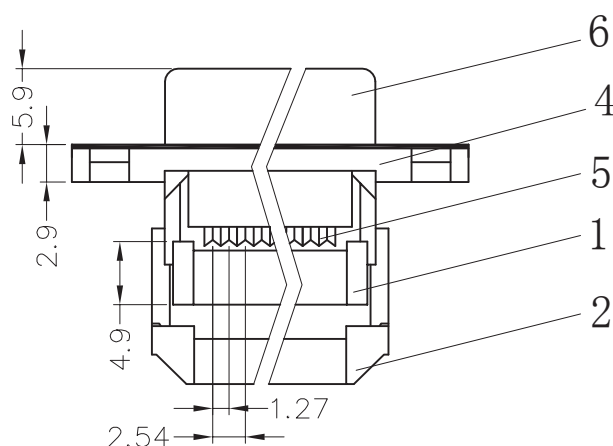
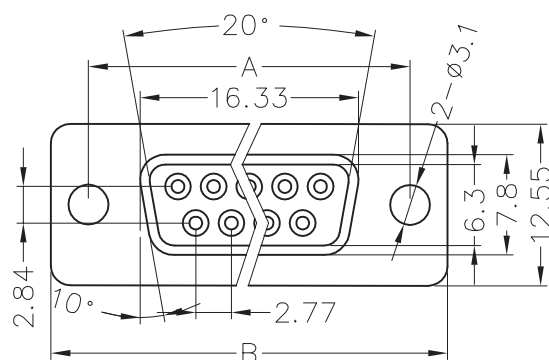
Voltage: AC 500V For 1 minute

Operating Temperature: -55°C÷+105°C

Contact: Phosphor Bronze

Housing: PBT & 30% Glass Fiber (UL 94V-0)

Articolo	Position	A	B
05/06330-00	9	24.99	30.81
05/06332-00	15	33.32	39.20
05/06334-00	25	47.04	53.10
05/06336-00	37	63.50	69.50



General Tolerance			
x.	±0.2	x."	±2°
.x	±0.1	.x°	±1°
.xx	±0.05	.xx"	±0.5°
.xxx	±0.01		

units: mm

Specifications:

Contact Resistance: 30mΩ max.at DC 100 mA

Insulator Resistance: 1000MΩ min.at DC 500V

Current Rating: 5AMP

Dielectric Withstanding

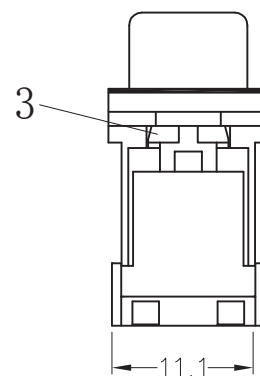
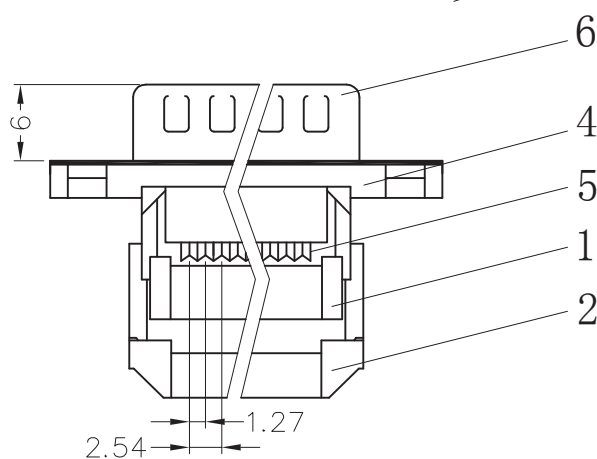
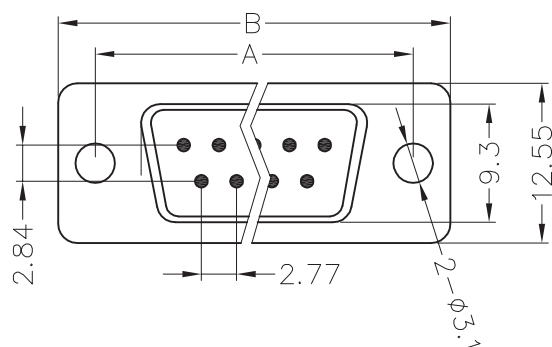
Voltage: AC 500V For 1 minute

Operating Temperature: -55°C÷+105°C

Contact: Brass

Housing: PBT & 30% Glass Fiber (UL 94V-0)

Articolo	Position	A	B
05/06400-00	9	24.99	30.81
05/06402-00	15	33.32	39.20
05/06404-00	25	47.04	53.10
05/06406-00	37	63.50	69.50



General Tolerance			
x.	±0.2	x."	±2°
.x	±0.1	.x"	±1°
.xx	±0.05	.xx"	±0.5
.xxx	±0.01		