

## Specifications:

Contact Resistance: 30mΩ max at DC 100 mA

Insulator Resistance: 1000MΩ min. at DC 500V

Current Rating: 5 AMP

## Dielectric Withstanding

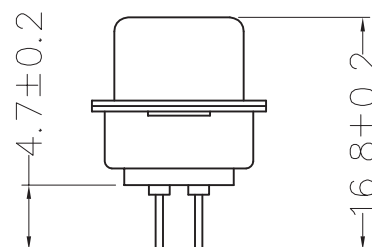
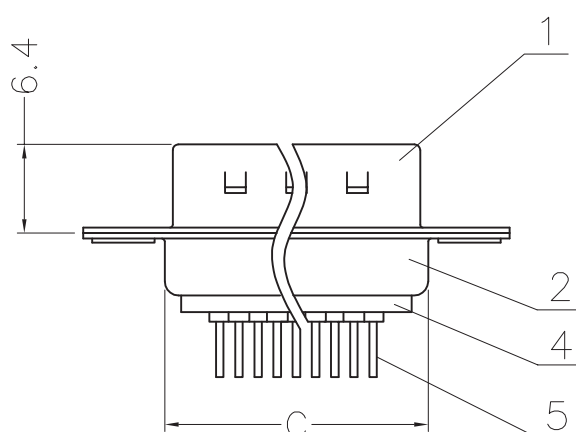
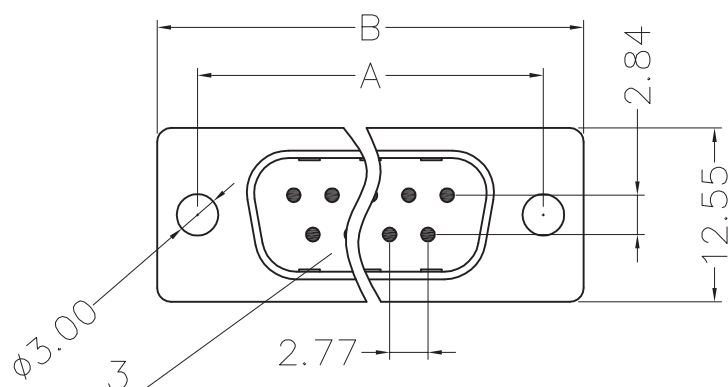
Voltage: AC 1000V For 1 minute

Operating Temperature: -55°C÷+105°C

Contact: Brass

Housing: PBT &amp;30% Glass Fiber(UL 94V-0)

Articolo	Position	A	B	C
05/06140-00	9	24.99	30.81	19.36
05/06142-00	15	33.32	39.20	27.64
05/06144-00	25	47.04	53.10	41.08



General Tolerance			
x.	±0.2	x.' ±2"	
.x	±0.1	.x' ±1"	
.xx	±0.05	.xx' ±0.5"	
.xxx	±0.01		
units: mm			

## Specifications:

Contact Resistance: 30mΩ max at DC 100 mA

Insulator Resistance: 1000MΩ min. at DC 500V

Current Rating: 5 AMP

## Dielectric Withstanding

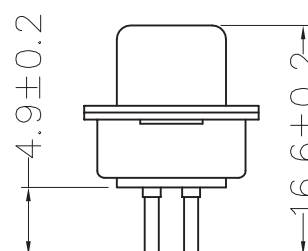
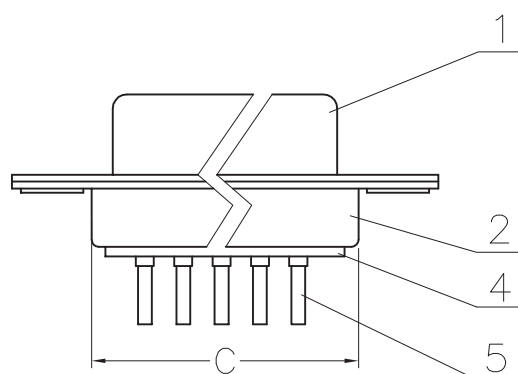
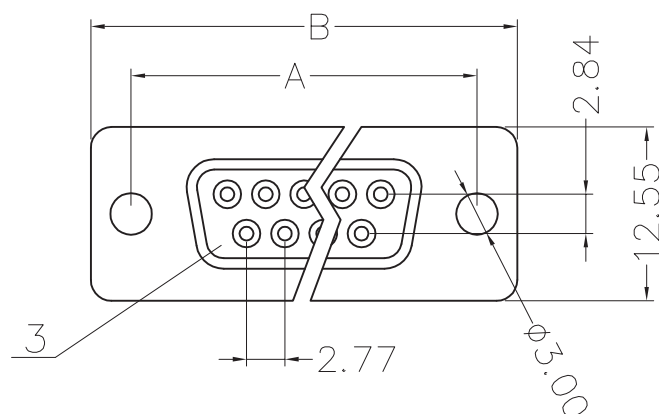
Voltage: AC 1000V For 1 minute

Operating Temperature: -55°C÷+105°C

Contact: Phosphor Bronze

Housing: PBT &amp; 30% Glass Fiber(UL 94V-0)

Articolo	Position	A	B	C
05/06140-00	9	24.99	30.81	19.36
05/06142-00	15	33.32	39.20	27.64
05/06144-00	25	47.04	53.10	41.08



General Tolerance			
x.	±0.2	x."	±2"
.x	±0.1	.x"	±1"
.xx	±0.05	.xx"	±0.5"
.xxx	±0.01		

units: mm