

## DM Series

## • Features

- \* Ultra small type, light weight yet cost.
- \* Terminals are insert molded against flux penetration during soldering.
- \* Good feeling and more levers are applied.

- **Applications**

- \* Operating in all types of electronic equipment such as appliances, audio, mouse, office, communications apparatus, etc.

• **Explanation**

DM 1-00 P-110-3

1. 2. 3. 4. 5. 6.

1. Series : DM micro switches
2. Rating : None 0.1A 125VAC, 1-1A 125 VAC 3 -3A 125 VAC
3. Lever: 00-None, 01 to 03
4. Terminal : P-P.C.B. type, T-Fixed type  
C-C type, D-D type
5. Operating Force : gf (see Table I)
6. Derivative: 3-white button  
4-red button

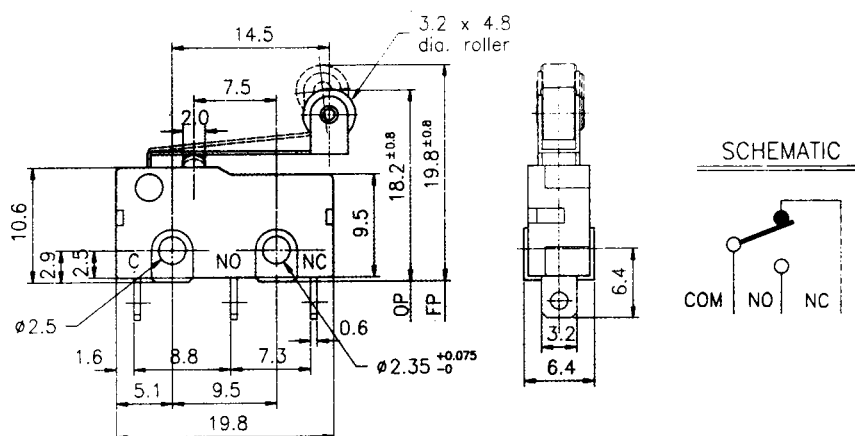
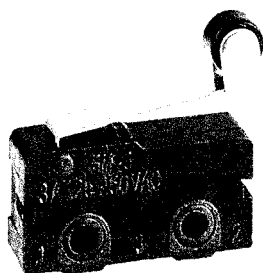
- **Example:**

DM-00P-130, DM1-01P-30-3, DM1-00T-110-3, DM1-03P-20, DM1-00P-110-3

- **Specification**

<b>Rating</b> : AC125V 1A, (AC125V 3A)	<b>Mechanical Life</b> : 1,000,000 cycles
<b>Insulation Resistance</b> : >100MΩ DC500V	<b>Electrical Life</b> : 30,000 cycles
<b>Withstand Voltage</b> : AC500V 1 minute	<b>Ambient Temper. Used</b> : -25°C to + 65° C
<b>Contact Resistance</b> : < 50 mΩ	<b>Ambient Humidity Used</b> : < 85% RH
<b>Soldering Temper.</b> : 250° C max. 3 sec	<b>Operating force</b> : see Table I

**SM3-05N 4/7439**



MODEL NO.	OPERATING FORCE (gf)											
SM3-05N- / SM5-05N-	14	20	25	30	34 4/7439	40	45	50	68	75	90	