

## CODED SWITCHES

### SPECIFICATIONS

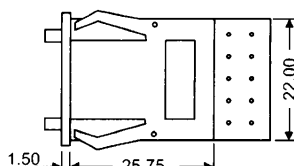
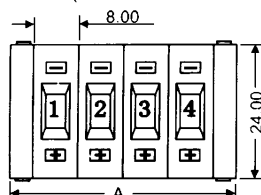
#### RATINGS/CHARACTERISTICS

Switching capacity	1mA to 0.1A 50 VAC/28 VDC (resistive load)
Carry current	1A max.
Contact resistance	200mΩ max.
Insulation resistance	10MΩ min. (At 250 VDC) between nonconnected terminals 100MΩ min (At 250 VDC) between each terminal and noncurrent-carrying part
Dielectric strength	250 VAC, 50/60Hz for 1 minute between nonconnected terminals 1,000 VAC, 50/60Hz for 1 minute between each terminal and noncurrent-carrying part
Operating force	450g max.
Vibration	10 to 55Hz, 1.5mm double amplitude
Shock	490m/s <sup>2</sup> (approx. 50g's)
Ambient temperature	Operating: -10 to +65° C; Storage: -20 to +80° C
Humidity	45 to 85% RH max.
Service life	Mechanically: 30,000 operations (steps) min. Electrically: 20,000 operations (steps) min.
Weight (per unit)	Approx. 4.5g

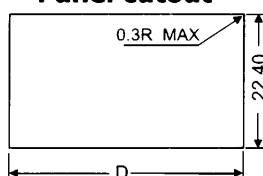
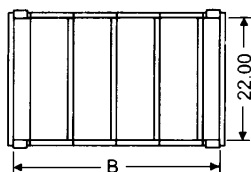
### DIMENSIONS (Unless otherwise specified, a tolerance of $\pm 0.4$ mm applies to all dimensions.)

#### SWITCH UNITS (Each model number applies to a single switch unit and does not apply to the switch assembly as shown in the drawings.)

4/7286



Panel cutout

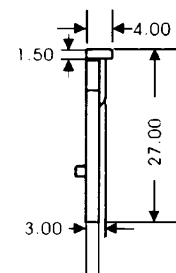
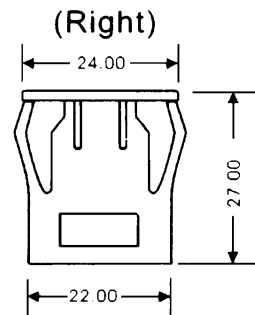
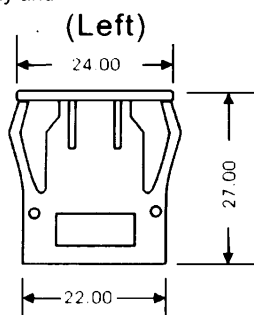
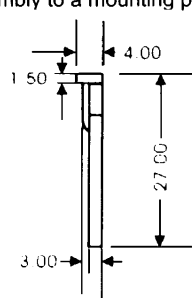


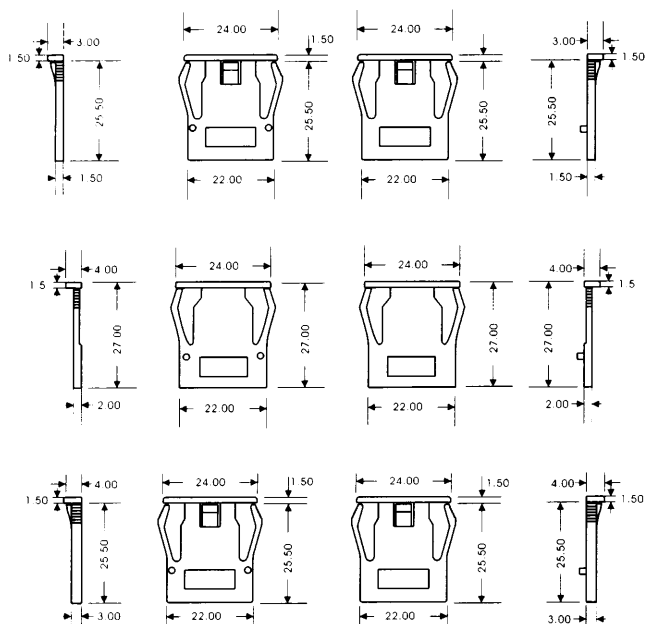
No. of units (N)	A (Nx8+8)	B (Nx8+6)	D
1	16	14	14.4
2	24	22	22.4
3	32	30	30.4
4	40	38	38.4
5	48 $\pm 0.8$	46 $\pm 0.8$	46.4
6	56 $\pm 0.8$	54 $\pm 0.8$	54.8
7	64 $\pm 0.8$	62 $\pm 0.8$	62.8
8	72 $\pm 0.8$	70 $\pm 0.8$	70.8
9	80 $\pm 0.8$	78 $\pm 0.8$	78.8
10	88 $\pm 0.8$	86 $\pm 0.8$	86.8

#### END CAPS

End caps are attached to each end of the switch assembly and used to secure the switch assembly to a mounting panel.

4/7290



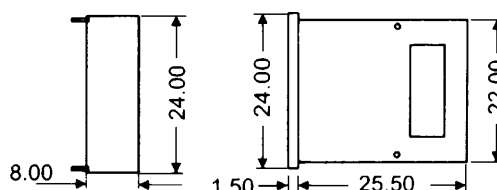


## • SPACERS

One of alphabetic codes must be suffixed to the model number to specify a legend to be hot stamped on the required spacer.

Code	Legend	Code	Legend	Code	Legend
A	Hot stamp not required	F	Kg	L	PCS
B	SEC	G	mm	P	day
C	MIN	H	cm	Q	X10SEC
D	H	J	m	T	0
E	g	K	°C	U	.

## 4/7288



## ■ OUTPUT CODES

### 01 DECIMAL-1 POLE; 10 POSITION

Dial Position	Common C Connected to Terminals = ●										
	C	0	1	2	3	4	5	6	7	8	9
0	●	●									
1	●		●								
2	●			●							
3	●				●						
4	●					●					
5	●						●				
6	●							●			
7	●								●		
8	●									●	
9	●										●

## 4/7286

### 02 BCD 0-9; 1-2-4-8.10 POSITION

Dial Position	Common C Connected to Terminals = ●				
	C	1	2	4	8
0	●				
1	●	●			
2	●		●		
3	●	●	●		
4	●			●	
5	●	●		●	
6	●		●	●	
7	●	●	●	●	
8	●				●
9	●	●			●

### 03 BCD 0-5; 1-2-4. 10 POSIT

Dial Position	Common C Connected to Terminals = ●			
	C	4	2	1
0	●			
1	●			●
2	●		●	
3	●		●	●
4	●	●		
5	●	●		●
4	●	●		
3	●		●	●
2	●		●	
1	●			●

### 04 SPDT REPEATING; 10 POSITION PLUS (+) AND MINUS (-) ALTERNATING

Dial Position	Common C Connected to Terminals = ●		
	C	+	-
+	●	●	
-	●		●
+	●	●	
-	●		●
+	●	●	
-	●		●
+	●	●	
-	●		●
+	●	●	
-	●		●

### 05 SPDT REPEATING; 10 POSITION ZERO (0) AND FIVE (1) ALTERNATING

Dial Position	Common C Connected to Terminals = ●		
	C	0	1
0	●	●	
1	●		●
0	●	●	
1	●		●
0	●	●	
1	●		●
0	●	●	
1	●		●
0	●	●	
1	●		●

### 06 H-M-S CODE 10 POSITION

Dial Position	Common C Connected to Terminals = ●		
	C	1	2
S	●	●	
M	●		
H	●		●
S	●	●	
M	●		
H	●		●
M	●		
S	●	●	
H	●		●
M	●		

## ■ TERMINALS

### 4/7286

