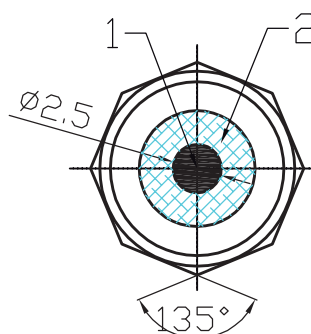
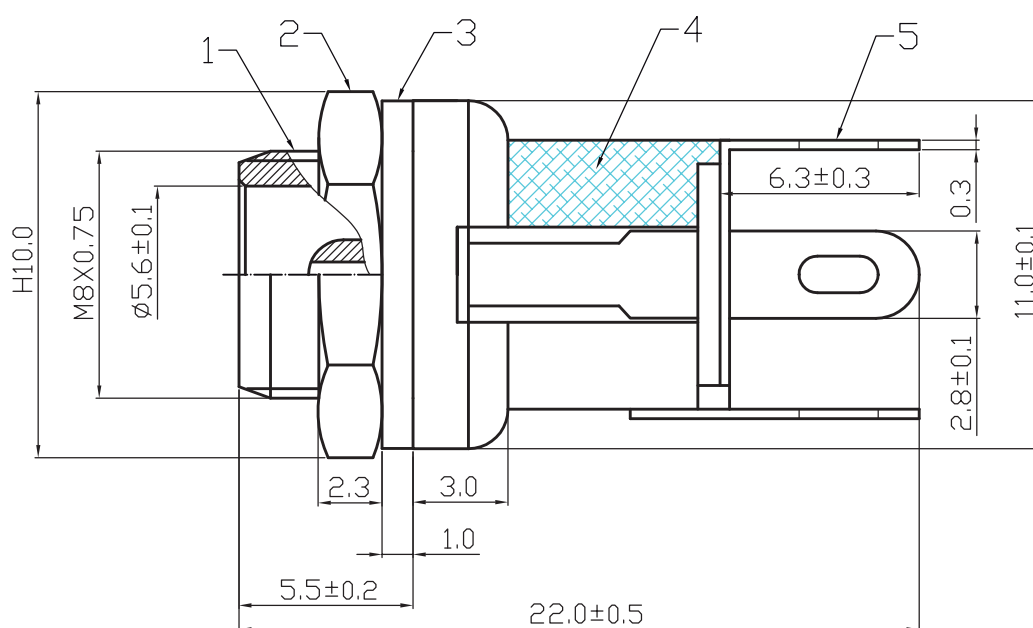


ART. 04/01300-00



ART. 04/01302-00



## ELECTRICAL CHARACTERISTIC

|   |  |
|---|--|
| ① | CONTACT RESISTANCE: $\leq 2$ milli $\Omega$ MAX                      |
| ② | INSULATION RESISTANCE: DC 500V $\geq 100M\Omega$ minimum             |
| ③ | WITHSTAND VOLTAGE: DC100V  |
| ④ | CURRENT RATING: DC/25V 4A  |
| ⑤ | OPERATING TEMPERATURE: $-30^{\circ}\text{C} \sim 60^{\circ}\text{C}$ |

|   |               |       |
|---|---------------|-------|
| 5 | CONTACT PATCH | BRASS |
| 4 | DIELECTRIC    | ABS   |
| 3 | FERRULE       | Fe    |

| ITEM | DESIGNATION   | MATERIAL | TOLERANCE   | SIGNATURES | DATE      |  |       |
|------|---------------|----------|---|------------|-----------|--|-------|
| 5    | CONTACT PATCH | BRASS    | 0 - 10 $\pm 0.05$<br>10 - 99 $\pm 0.5$<br>100 - 999 $\pm 10.0$<br>1000 - 9999 $\pm 100.00$<br>10000 - 99999 $\pm 1000.00$ |            | 11.06.10  |  |       |
| 4    | DIELECTRIC    | ABS      |   |            |           |  |       |
| 3    | FERRULE       | Fe       |   |            |           |  |       |
| 2    | NUT           | BRASS    |   |            |           |  |       |
| 1    | BODY          | BRASS    |   |            |           |  |       |
| REV. | ECO           | PART NO. | DATE  | BY         | APPROVAL: |  | TITLE |
| A    |               |          |   |            |           |  |       |
| B    |               |          |   |            |           |  |       |