

30/981

EH-170B26 NI-MH (SIZE): BUTTON CELL

Cell Dimension (With shrink sleeve)

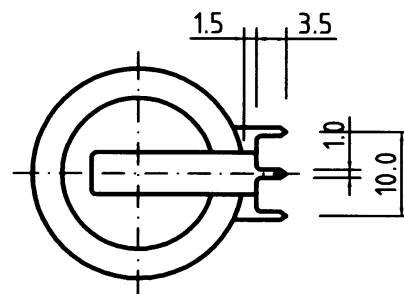
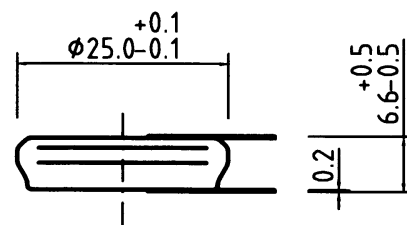
Diameter	25 ± 0.5 mm
Height	6.5 ± 0.7 mm
Approximate Weight	10.5 g

Specifications

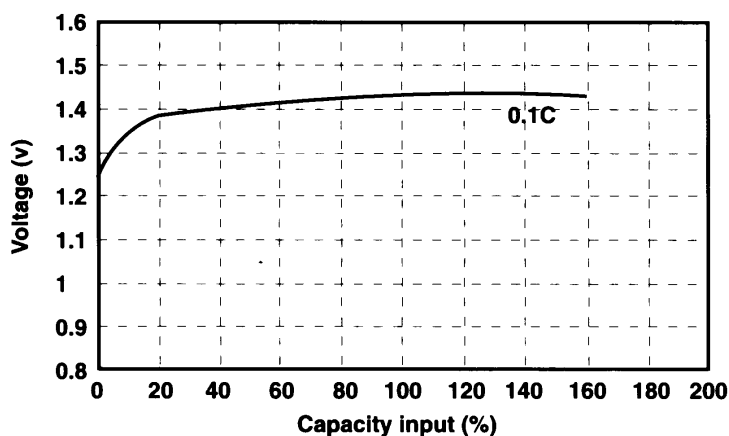
Nominal Voltage		1.2 V	
0.2C Discharge Capacity*		Typical **	240 mAh
		Nominal	230 mAh
Charge		Standard	23 mA for 14 to 16hr
		Fast	35 mA for 7 - 8 hr
Life Expectancy		500 cycles	
Operating Temperature	Charge	Standard	0°C to 40°C
		Fast	10°C to 30°C
	Discharge		-10°C to 40°C
	Storage	<6 months	0°C to 35°C
		<2 months	0°C to 45°C

* After charging for 16 hr. with 0.1 C

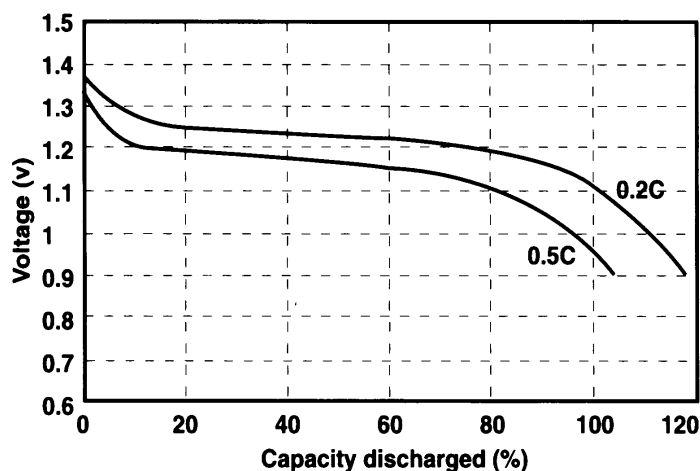
** Average capacity



Charging curve of single cell EH-170B26 at 0.1C charging rate



Discharge curves of single cell EH-170B26 at various discharge rates at room temperature.



30/982

EH-170B26 NI-MH (SIZE): BUTTON CELL

Cell Dimension (With shrink sleeve)

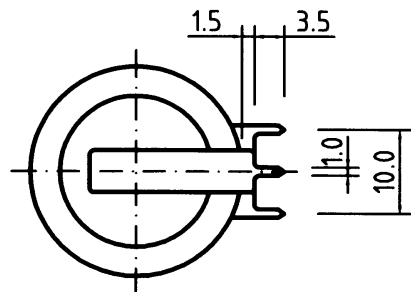
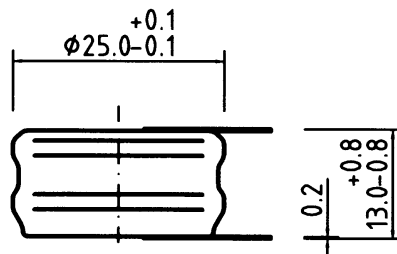
Diameter	25 ± 0.5 mm
Height	13 ± 0.7 mm
Approximate Weight	20 g

Specifications

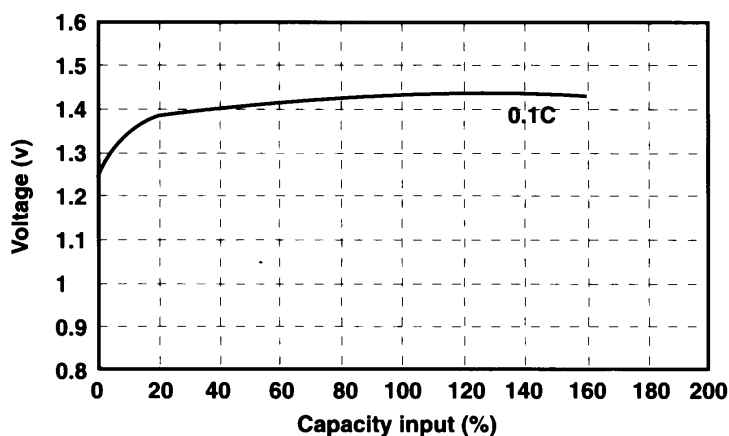
Nominal Voltage		2;4 V	
0.2C Discharge Capacity*		Typical **	240 mAh
		Nominal	230 mAh
Charge		Standard	23 mA for 14 to 16hr
		Fast	35 mA for 7 - 8 hr
Life Expectancy		500 cycles	
Operating Temperature	Charge	Standard	0°C to 40°C
		Fast	10°C to 30°C
	Discharge		-10°C to 40°C
	Storage	<6 months	0°C to 35°C
		<2 months	0°C to 45°C

* After charging for 16 hr. with 0.1 C

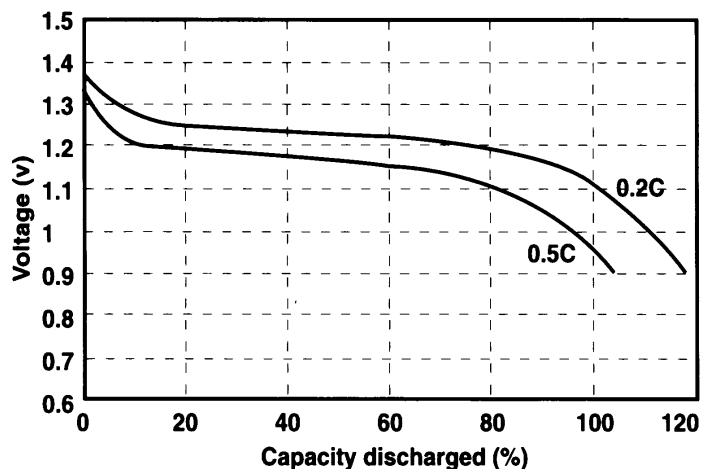
** Average capacity



Charging curve of single cell EH-170B26 at 0.1C charging rate



Discharge curves of single cell EH-170B26 at various discharge rates at room temperature.



30/983

EH-170B26 NI-MH (SIZE): BUTTON CELL

Cell Dimension (With shrink sleeve)

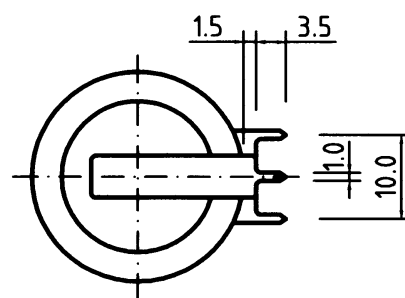
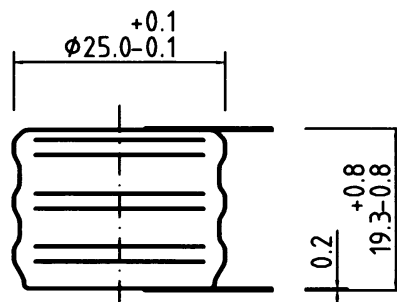
Diameter	25 ± 0.5 mm
Height	19.5 ± 0.7 mm
Approximate Weight	29.5 g

Specifications

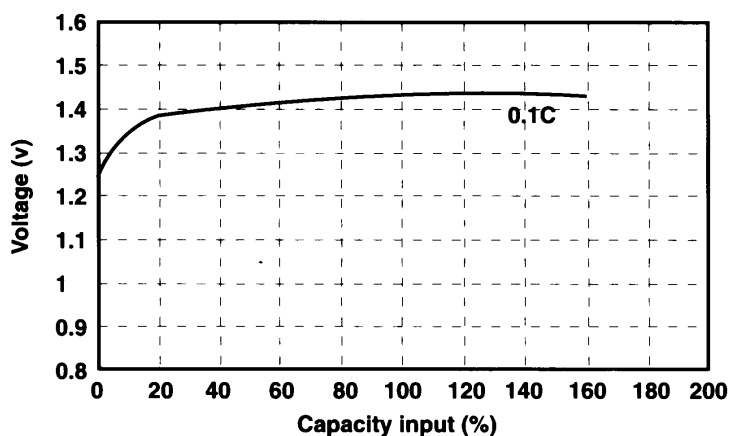
Nominal Voltage		3.6 V	
0.2C Discharge Capacity*		Typical **	240 mAh
		Nominal	230 mAh
Charge		Standard	23 mA for 14 to 16hr
		Fast	35 mA for 7 - 8 hr
Life Expectancy		500 cycles	
Operating Temperature	Charge	Standard	0°C to 40°C
		Fast	10°C to 30°C
	Discharge		-10°C to 40°C
	Storage	<6 months	0°C to 35°C
		<2 months	0°C to 45°C

* After charging for 16 hr. with 0.1 C

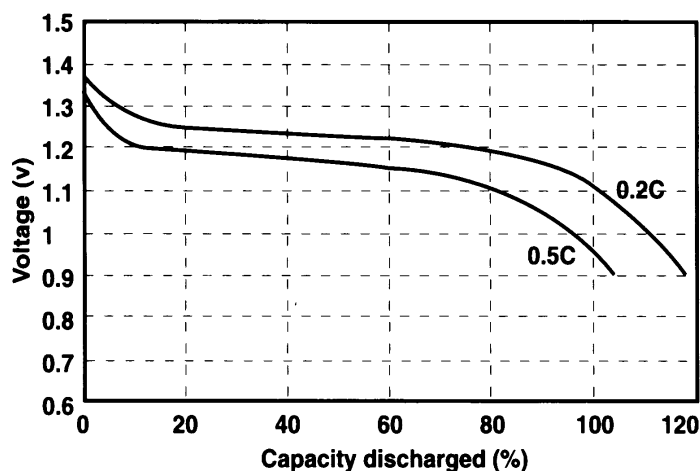
** Average capacity



Charging curve of single cell EH-170B26 at 0.1C charging rate



Discharge curves of single cell EH-170B26 at various discharge rates at room temperature.



30/984

EH-170B26 NI-MH (SIZE): BUTTON CELL

Cell Dimension (With shrink sleeve)

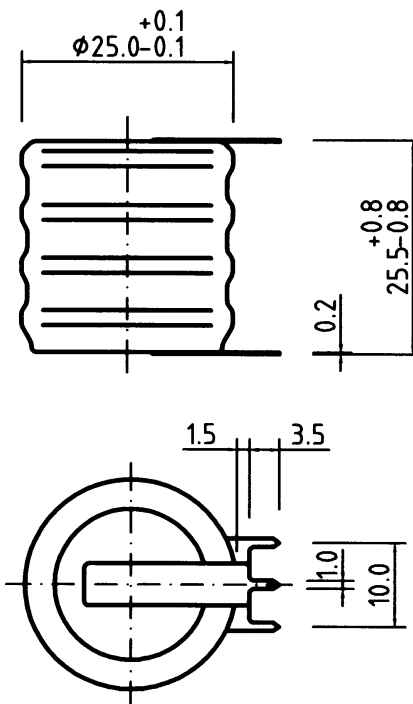
Diameter	25 ± 0.5 mm
Height	27 ± 0.7 mm
Approximate Weight	39 g

Specifications

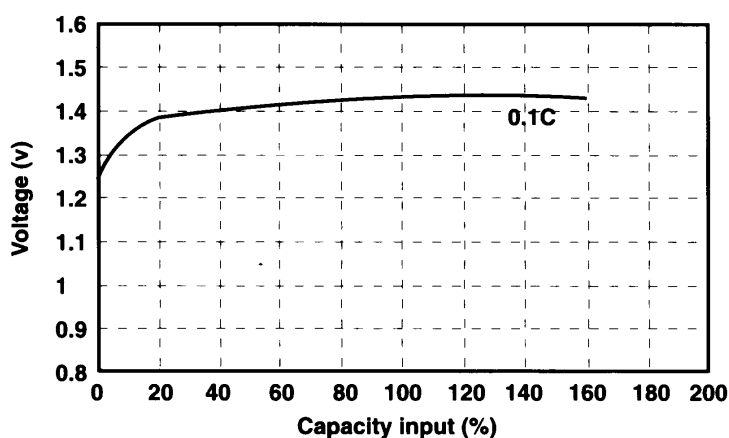
Nominal Voltage		4.8 V	
0.2C Discharge Capacity*		Typical **	240 mAh
		Nominal	230 mAh
Charge		Standard	23 mA for 14 to 16hr
		Fast	35 mA for 7 - 8 hr
Life Expectancy		500 cycles	
Operating Temperature	Charge	Standard	0°C to 40°C
		Fast	10°C to 30°C
	Discharge		-10°C to 40°C
	Storage	<6 months	0°C to 35°C
		<2 months	0°C to 45°C

* After charging for 16 hr. with 0.1 C

** Average capacity



Charging curve of single cell EH-170B26 at 0.1C charging rate



Discharge curves of single cell EH-170B26 at various discharge rates at room temperature.

