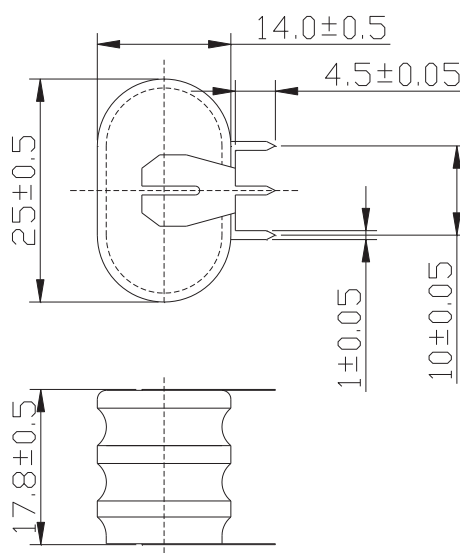


EH-140B16-24 3,6V 160mAh Ni-MH BUTTON CELL

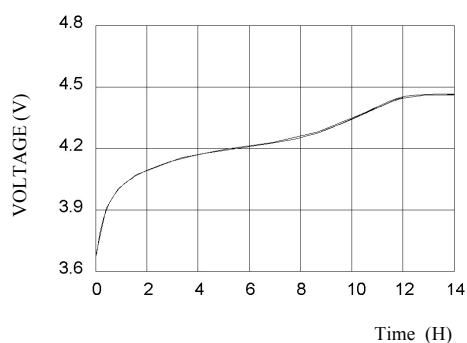
TECHNICAL DATA



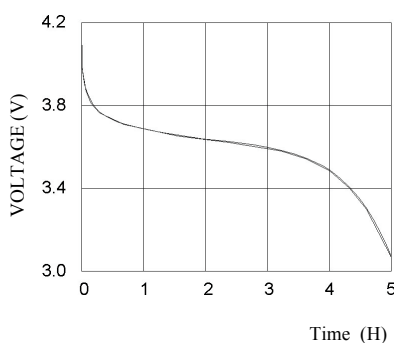
| Model | Voltage | Capacity | Recommended Trickle Charge Current | Nominal Charge Current | Normal Charging Time | Nominal Discharge Current | Weight |
|--------------|---------|----------|------------------------------------|------------------------|----------------------|---------------------------|--------|
| EH-140B16-24 | 3.6V | 160mAh | 4.8~8.0mA | 16mA | 14~16h | 32mA | 4.5g |

TECHNICAL CHARACTERISTICS

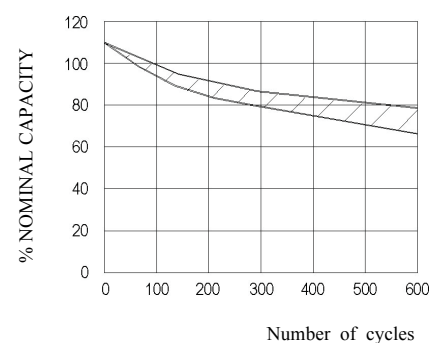
TYPICAL CHARGE CURVE (16mA)



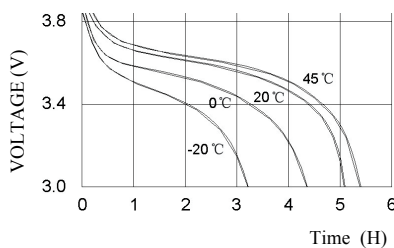
TYPICAL DISCHARGE CURVE (32mA)



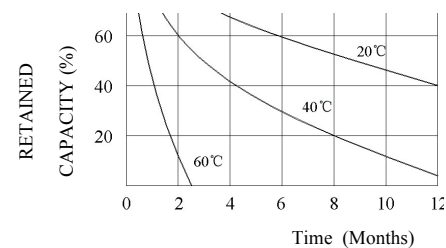
CYCLE LIFE CURVE



DISCHARGE CURVE AT VARIOUS TEMPERATURES (32mA)



SELF DISCHARGE RATE AT VARIOUS TEMPERATURES



ELCART DISTRIBUTION SPA via Michelangelo Buonarroti, 46 - 20093 Cologno Monzese (Milano) ITALY
 Tel. +39 02.25117310 Fax +39 02.25117610 sito internet: www.elcart.com e-mail: info@elcart.it

La divulgazione dei dati contenuti in questa scheda è da ritenersi un servizio puramente informativo e non costituisce alcun vincolo da parte della Elcart in merito a prestazioni ed utilizzo del prodotto.
 The divulgation of data contained on this technical sheet are exclusively for informational reasons and establish no link on behalf of Elcart regard to thr performances and the usa of the product.
 La divulgacion de los datos contenidos en esta ficha son un servicio unicamente informativo y no constituyen ningun vinculo de parte de Elcart respecto a las prestaciones y uso del producto.

TECHNICAL INFORMATION

1. APPLICATION

This specification applies to the Ni-MH batteries Model: EH-140B16-24

| 2.0 CELL AND TYPE | |
|-------------------|--------------------------|
| 2.1 Cell | Sealed Ni-MH Button Cell |
| 2.2 Type | Button type |
| 2.3 Size type | 3.6V |

| 3.0 RATINGS | |
|----------------------|-----------------|
| 3.1 Nominal voltage | 3.6V |
| 3.2 Nominal capacity | 160mAh/0.2CmA |
| 3.3 Typical weight | 17.5g |
| 3.4 Standard charge | 16mA x 14 hours |
| 3.5 Rapid charge | 32mA x 6 hours |
| Trickle current | 4.8mA |

| | |
|-------------------------------|------|
| 3.6 Discharge cut-off voltage | 3.0V |
|-------------------------------|------|

| 3.7 Temperature range for operation (Humidity: Max.85%) | |
|---|-----------|
| Standard charge | 0~+45°C |
| Rapid charge | +10~+45°C |
| Trickle charge | 0~+45°C |
| Discharge | -10~+45°C |

| 3.8 Temperature range for storage (Humidity: Max.85%) | |
|---|-----------|
| Within 2 years | -20~+35°C |
| Within 6 months | -20~+45°C |
| Within a month | -20~+45°C |
| Within a week | -20~+55°C |

| | |
|-------------------------|----------------------|
| 4 Assembly & Dimensions | Per attached drawing |
|-------------------------|----------------------|

5 PERFORMANCE

| 5.1 TEST CONDITIONS | |
|---|-----------|
| The test is carried out with new batteries (within a month after delivery) | |
| Ambient conditions: | |
| Temperature | +25 ± 5°C |
| Humidity | 60 ± 20% |

Note 1

Standard charge: 16mA x 14 hours

Standard discharge: 0.2C to 3.0V

5.2 TEST METHOD & PERFORMANCE

| Test | Unit | Specification | Conditions | Remarks |
|------------------------------|------------------|-------------------------------|---|-------------------------------|
| Capacity | mAh | ≥ 160 | Standard Charge/discharge | Up to 3 cycles Are allowed |
| Open Circuit Voltage(OCV) | Voltage (V) | ≥ 3.9 | After 1 hour standard Charge | |
| Internal Impedance | m Ω /cell | ≤ 350 | Upon fully charge (1KHz) | |
| High rate Discharge(0.5C) | Minute | ≥ 60 | Standard charge Before discharge | |
| Discharge Current | mA | 80 | Maximum continuous Discharge current | |
| Over charge | | No leakage Not explosion | 4.8mA(0.03C) charge one year | |
| Charge Retention | mAh | 128 | Standard charge; Storage: 28 days; Standard discharge | |
| Cycle Life | Cycle | ≥ 500 | | |
| Leakage | | No leakage nor Deformation | Fully charge at 32mA, Stand 14 days | |

| Cycle number | Charge | Rest | Discharge |
|--------------|--------------|------|-------------|
| 1-50 | 16mA for 14h | | 32mA for 5h |

50 cycles of test as in the following table condition is repeated, The discharge time of the 100th, 200th, 400th, 500th is more than 5 hours. (Ambient temperature is $20 \pm 5^\circ\text{C}$)

5.3 Humidity

The battery shall not leak during the 14 days which it is submitted to the condition of a temperature of $33 \pm 3^\circ\text{C}$ and a relative humidity of $80 \pm 5\%$

6. OTHERS

6.1 We recommend you to set the cut-off voltage at 1.0V/cell

6.2 If the cut-off voltage is above 1.1V/cell, the battery may be underutilized resulting insufficient use of the available capacity

6.3 If it is below 1.0V/cell, the battery may have discharge or reverse charge to the cell

7. PRECAUTION

The cells shall be delivered in charged condition. Before testing or using, the cell shall be discharged at $20 \pm 5^\circ\text{C}$ at a constant current of 0.2CmA to a final voltage of 1.0V/cell.

7.1 Avoid throwing cells into a fire or attempting to disassemble them.

7.2 Avoid short circuiting the cells.

7.3 Avoid direct solidarity to cells.

7.4 Observe correct polarity when connecting.

7.5 Do not charge with more than our specified current.

7.6 Use cells only within the specified working temperature range.

7.7 Store cells in dry and cool place.

ELCART DISTRIBUTION SPA via Michelangelo Buonarroti, 46 - 20093 Cologno Monzese (Milano) ITALY
Tel. +39 02.25117310 Fax +39 02.25117610 sito internet: www.elcart.com e-mail: info@elcart.it

La divulgazione dei dati contenuti in questa scheda è da ritenersi un servizio puramente informativo e non costituisce alcun vincolo da parte della Elcart in merito a prestazioni ed utilizzo del prodotto.
The divulgation of data contained on this technical sheet are exclusively for informational reasons and establish no link on behalf of Elcart regard to the performances and the use of the product.
La divulgación de los datos contenidos en esta ficha son un servicio unicamente informativo y no constituyen ningún vínculo de parte de Elcart respecto a las prestaciones y uso del producto.