

30/861

EH-60B16 NI-MH (SIZE): BUTTON CELL

Cell Dimension (With shrink sleeve)

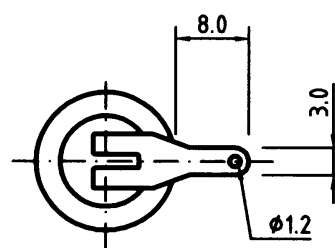
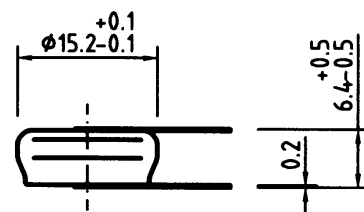
Diameter	15.5 ± 0.7 mm
Height	6.3 ± 1.0 mm
Approximate Weight	5 g

Specifications

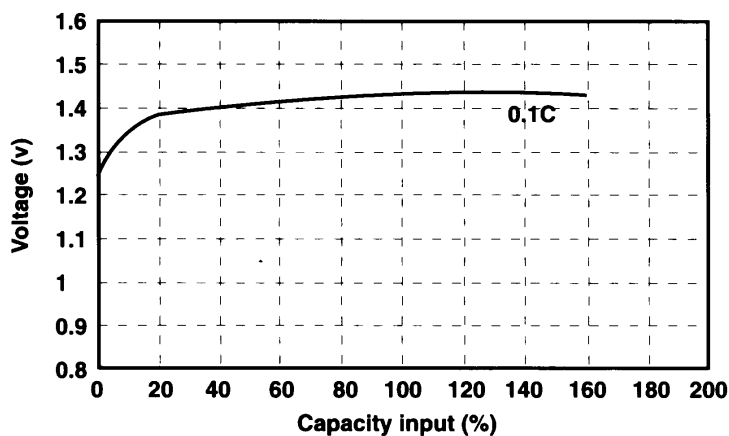
Nominal Voltage			1.2 V
0.2C Discharge Capacity*		Typical **	65 mAh
		Nominal	60 mAh
Charge		Standard	6 mA for 14 to 16hr
		Fast	12 mA for 7 - 8 hr
Life Expectancy		500 cycles	
Operating Temperature	Charge	Standard	0°C to 40°C
		Fast	10°C to 30°C
	Discharge		-10°C to 40°C
	Storage	<6 months	0°C to 35°C
		<2 months	0°C to 45°C

* After charging for 16 hr. with 0.1 C

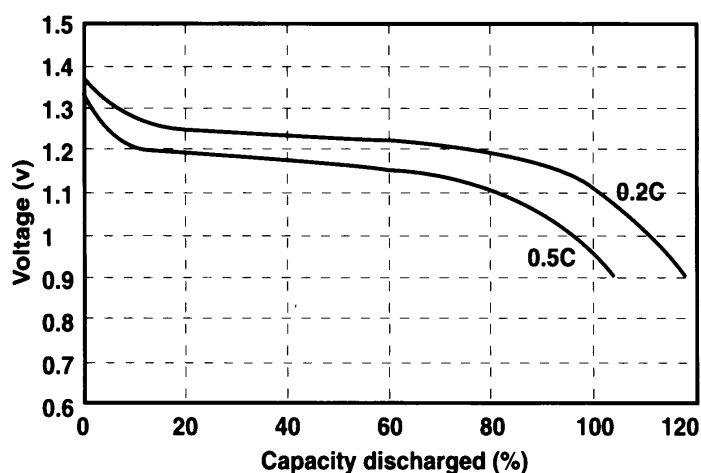
** Average capacity



Charging curve of single cell EH-60B16 at 0.1C charging rate



Discharge curves of single cell EH-60B16 at various discharge rates at room temperature.



30/862

EH-60B16 NI-MH (SIZE): BUTTON CELL

Cell Dimension (With shrink sleeve)

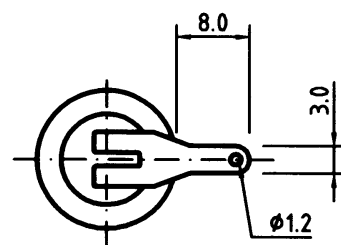
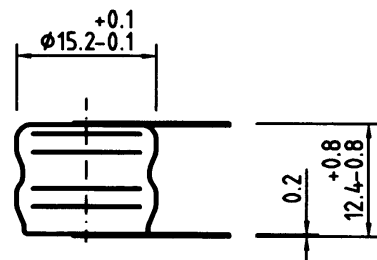
Diameter	15.5 ± 0.7 mm
Height	12.5 ± 1.0 mm
Approximate Weight	9 g

Specifications

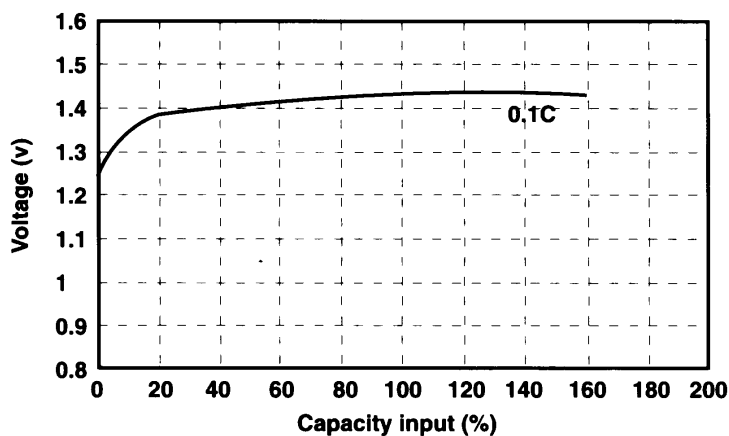
Nominal Voltage			2.4 V
0.2C Discharge Capacity*		Typical **	65 mAh
		Nominal	60 mAh
Charge		Standard	6 mA for 14 to 16hr
		Fast	12 mA for 7 - 8 hr
Life Expectancy		500 cycles	
Operating Temperature	Charge	Standard	0°C to 40°C
		Fast	10°C to 30°C
	Discharge		-10°C to 40°C
	Storage	<6 months	0°C to 35°C
		<2 months	0°C to 45°C

* After charging for 16 hr. with 0.1 C

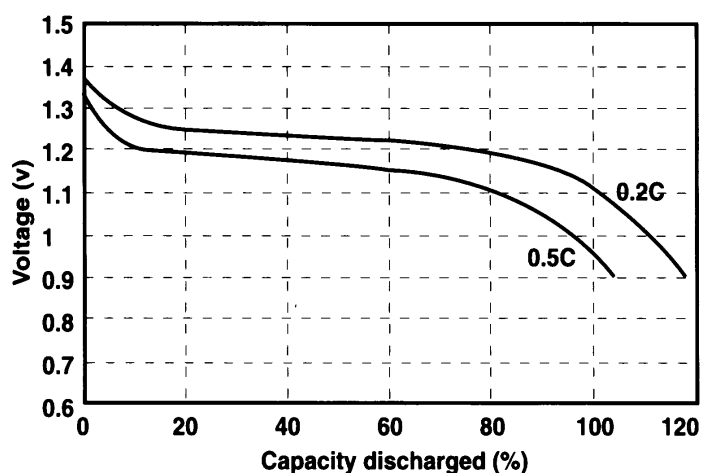
** Average capacity



Charging curve of single cell EH-60B16 at 0.1C charging rate



Discharge curves of single cell EH-60B16 at various discharge rates at room temperature.



30/863

EH-60B16 NI-MH (SIZE): BUTTON CELL

Cell Dimension (With shrink sleeve)

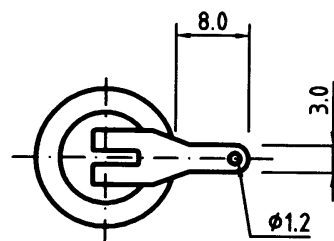
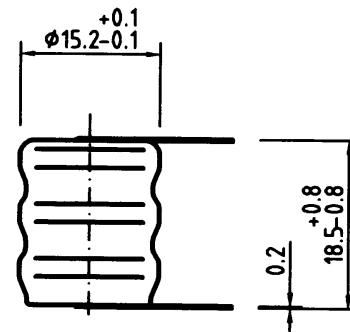
Diameter	15.5 ± 0.7 mm
Height	18.5 ± 1.0 mm
Approximate Weight	13 g

Specifications

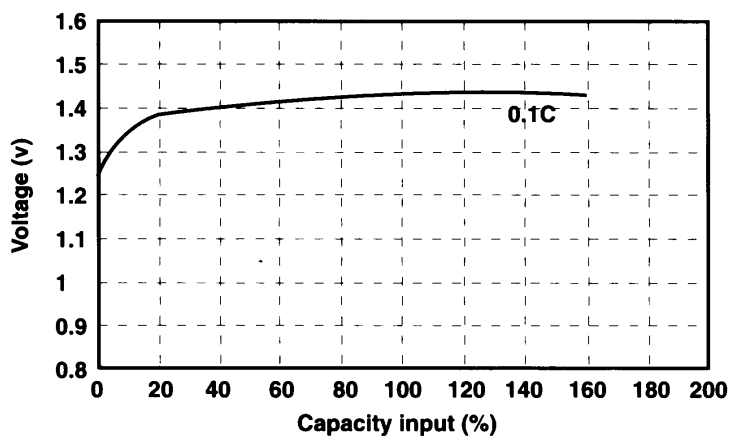
Nominal Voltage		3.6 V	
0.2C Discharge Capacity*		Typical **	65 mAh
		Nominal	60 mAh
Charge		Standard	6 mA for 14 to 16hr
		Fast	12 mA for 7 - 8 hr
Life Expectancy		500 cycles	
Operating Temperature	Charge	Standard	0°C to 40°C
		Fast	10°C to 30°C
	Discharge		-10°C to 40°C
	Storage	<6 months	0°C to 35°C
		<2 months	0°C to 45°C

* After charging for 16 hr. with 0.1 C

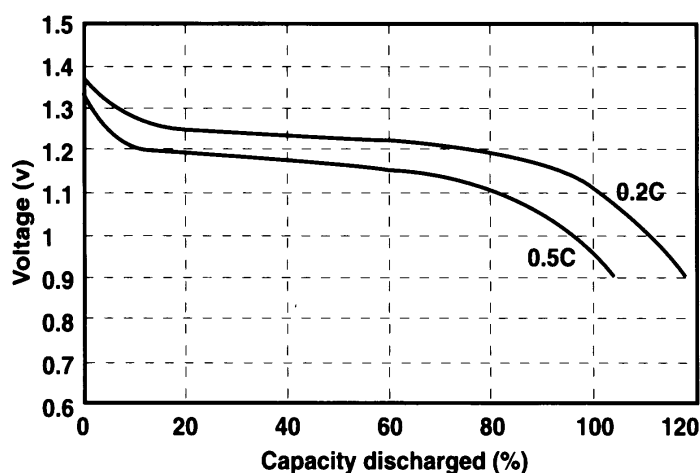
** Average capacity



Charging curve of single cell EH-60B16 at 0.1C charging rate



Discharge curves of single cell EH-60B16 at various discharge rates at room temperature.



30/864

EH-60B16 NI-MH (SIZE): BUTTON CELL

Cell Dimension (With shrink sleeve)

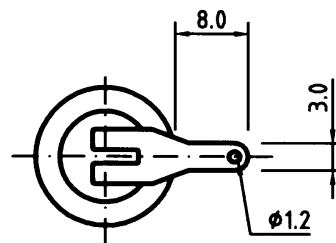
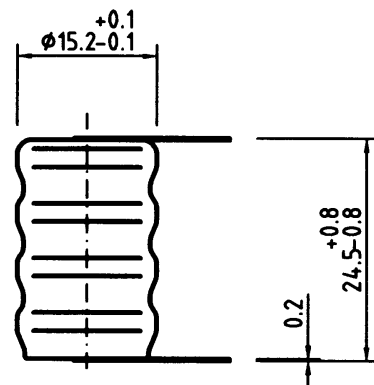
Diameter	15.5 ± 0.7 mm
Height	24.5 ± 1.0 mm
Approximate Weight	18 g

Specifications

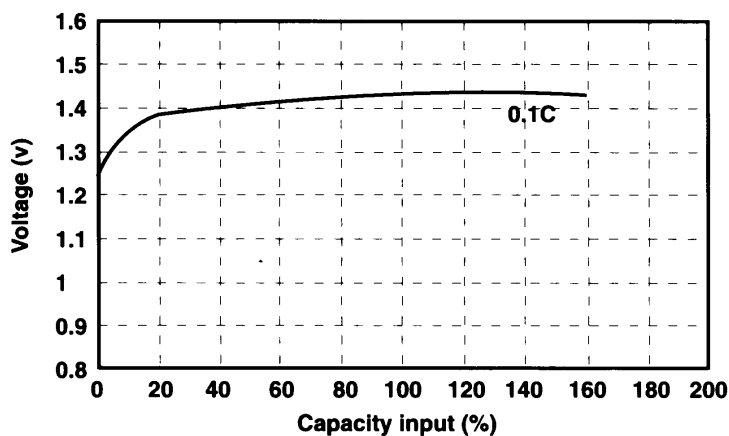
Nominal Voltage		4.8V	
0.2C Discharge Capacity*		Typical **	65 mAh
		Nominal	60 mAh
Charge		Standard	6 mA for 14 to 16hr
		Fast	12 mA for 7 - 8 hr
Life Expectancy		500 cycles	
Operating Temperature	Charge	Standard	0°C to 40°C
		Fast	10°C to 30°C
	Discharge		-10°C to 40°C
	Storage	<6 months	0°C to 35°C
		<2 months	0°C to 45°C

* After charging for 16 hr. with 0.1 C

** Average capacity



Charging curve of single cell EH-60B16 at 0.1C charging rate



Discharge curves of single cell EH-60B16 at various discharge rates at room temperature.

