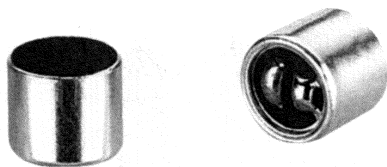


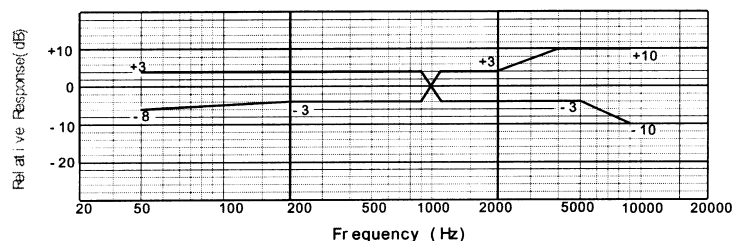
■ Appearance



■ Sensitivity

 $-46 \pm 3 \text{ dB}$

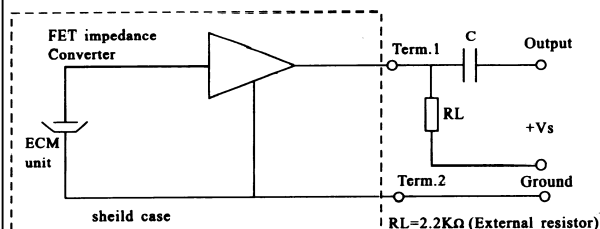
■ Typical Frequency Response Curve



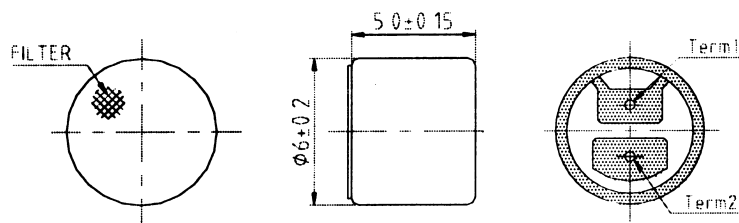
■ Std.Operating Conditions

 $V_s = 3 \text{ V}$
 $R_L = 2.2 \text{ k}\Omega$

■ Schematic Diagram



■ Dimensional Drawing



■ Specifications

Sensitivity:

 $-46 \pm 3 \text{ dB}$

Impedance:

Less than $2.2 \text{ k}\Omega$

Directivity:

Omnidirectional

Standard operation voltage:

3V

Current consumption:

Max. 0.5mA

Sensitivity reduction:

Within - 3dB at 1.5V

S/N ratio:

More than 58dB