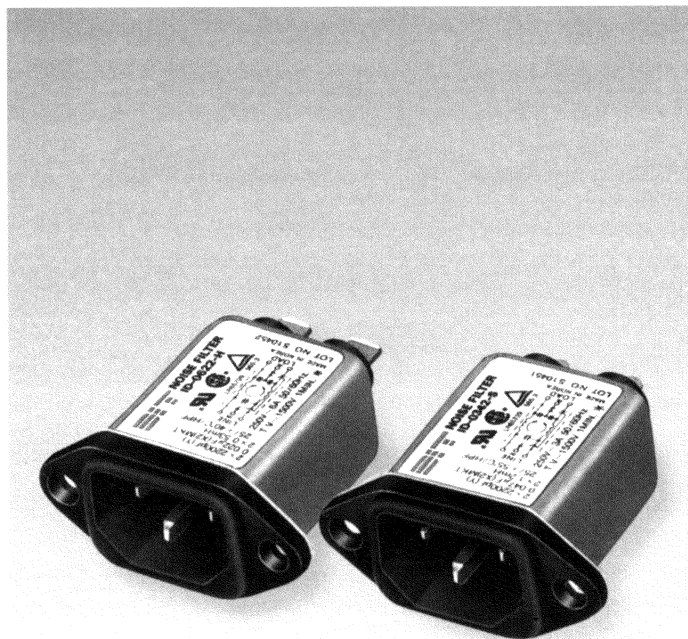


EMI/EMC FILTER ID SERIES



FEATURES

- Ideally suited for products that must conform to part 15, FCC regulations.
- Metal cased miniature type with high performance.
- Meet over voltage category II of IEC 664 and comply with IEC 950.
- Uses IEC connector that meets the safety standards of virtually all certifying organizations.
- Both soldering lug type and faston tab type are available.
- ID- **2(4)*-* Type : UL, CSA, TÜV, SEMKO, NEMKO, FIMKO, DEMKO, SEV approved.
- ID- **A*-* Type : UL, CSA, TÜV, SEMKO, FIMKO approved.
- ID-L03A *-* Type : UL, CSA, TÜV, SEMKO approved.
- ID-L032(4) *-* Type : UL, CSA, TÜV, SEMKO, DEMKO approved.

APPLICATIONS

- Digital equipments.
- Personal computers and peripherals.
- Measuring instruments.
- For use in miniature equipments.
- For monitors and display units.

SPECIFICATIONS

ART.	Model	Rated Voltage (AC, DC)	Rated Current	Leakage Current (250V AC)	Temperature Rise	Operating Temperature
	ID-012(4/A)2-S(H)	250V	1A	0.35mA max.	30°C max.	-25°C to +85°C Including temperature rise
	ID-012(4/A)3-S(H)			0.50mA max.		
	ID-022(4/A)2-S(H)	250V	2A	0.35mA max.	30°C max.	
	ID-022(4/A)3-S(H)			0.50mA max.		
	ID-032(4/A)2-S(H)	250V	3A	0.35mA max.	30°C max.	
	ID-032(4/A)3-S(H)			0.50mA max.		
13/1750	ID-062(4/A)2-S(H)	250V	6A	0.35mA max.	45°C max.	
	ID-062(4/A)3-S(H)			0.50mA max.		
		ID-1022-S(H)	250V	10A	0.35mA max.	45°C max.
	ID-1023-S(H)	0.50mA max.				
	ID-L032(4/A)2-S(H)	250V	3A	0.35mA max.	45°C max.	
	ID-L032(4/A)3-S(H)			0.50mA max.		

Ambient Temperature (°C)	Current (%)
25	100
30	100
40	100
50	100
60	100
70	80
80	40
90	0

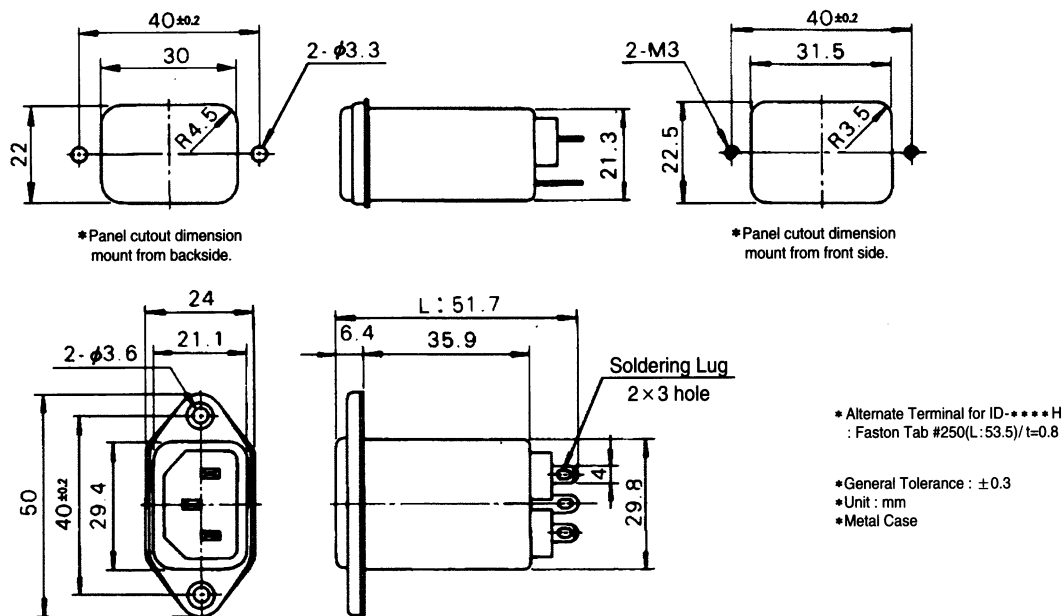
Note :

Test Voltage : 1500V AC one minute, line to earth.
Insulation Resistance : 300 Mohm min. at 500V DC.
Voltage Drop : 1V max. at rated current.
Weight : 45g
Inlet : Compatible with IEC-320.

Model Number Construction

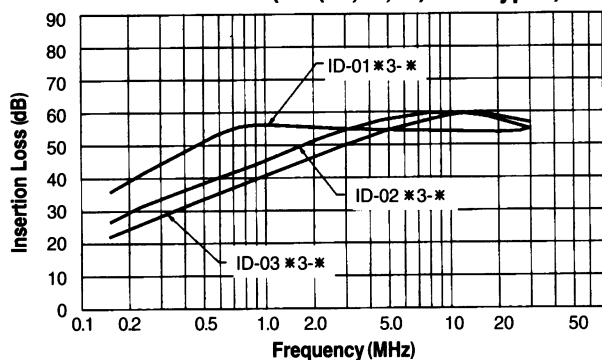
I	D	03	4	2	S
Input Connector I:IEC Connector	D:Screw Mounting /Metal Case	Current Rating :AC rms 01:1 amp, 02:2 amp 03:3 amp, 06:6 amp L03:3 amp(higher performance than "03") 10:10 amp	Line-Line Cap. Value (Input side) 2:0.022µF 4:0.047µF (except 10 amp. filter) A:0.1µF (except 10 amp. filter)	Line-Gnd. Cap. Value 2:2200pF 3:3300pF	Output Terminal Style S:Solder Lug H:Faston Tab #250

Shapes and Dimensions

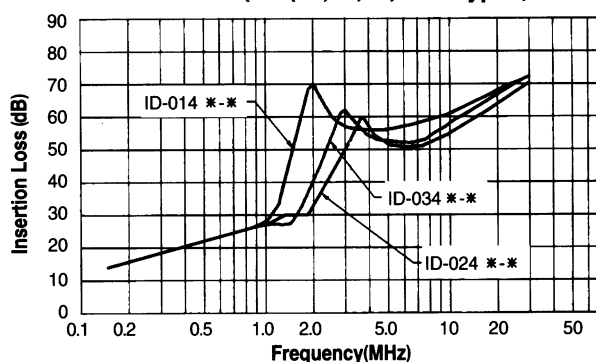


Attenuation Characteristics

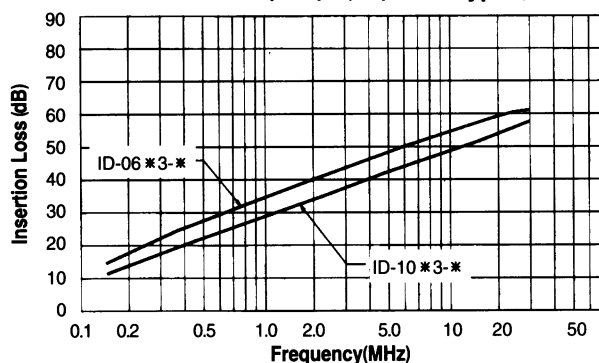
• Common Mode (ID-(01,02,03) * 3 - * types)



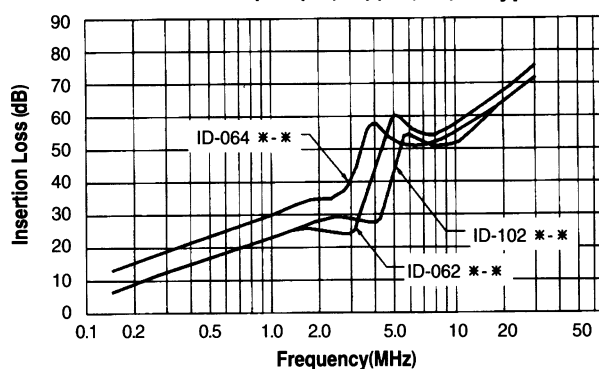
• Normal Mode (ID-(01,02,03) 4 - * types)



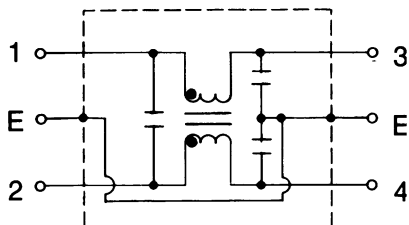
• Common Mode (ID-(06,10) * 3 - * types)



• Normal Mode (ID-(06,10) (2,4) - * types)



• Circuit Diagram



• Measurement Configuration

