

Specifications:

Contact Resistance: 30mΩ max. at DC 100 mA

Insulator Resistance: 1000MΩ min. at DC 500V

Current Rating: 5AMP

Dielectric Withstanding

Voltage: AC 1000V For 1 minute

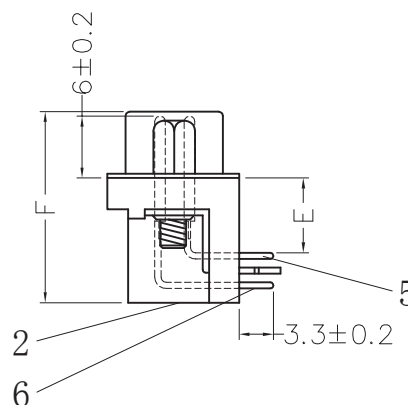
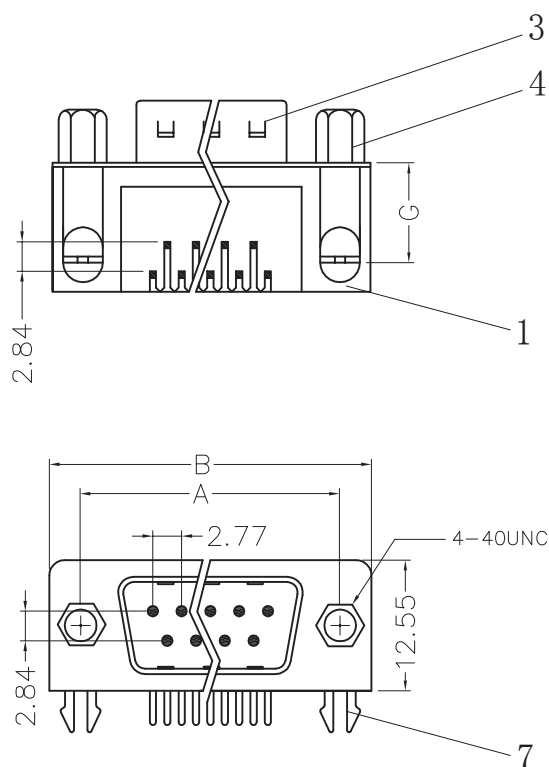
Operating Temperature: -55°C÷+105°C

Contact: Brass

Housing: PBT &30% Glass Fiber(UL 94V-0)

Articolo	Position	A	B
05/06500-00	9	24.99	30.81
05/06505-00	15	33.32	39.20
05/06510-00	25	47.04	53.10

E	F	G
7.2	18.4	9.62
9.4	20.64	12.06
13.84	25.3	16.5



General Tolerance			
x.	±0.2	x."	±2"
.x	±0.1	.x"	±1"
.xx	±0.05	.xx"	±0.5"
.xxx	±0.01		

units: mm

Specifications:

Contact Resistance: 30mΩ max. at DC 100 mA

Insulator Resistance: 1000MΩ min. at DC 500V

Current Rating: 5AMP

Dielectric Withstanding

Voltage: AC 1000V For 1 minute

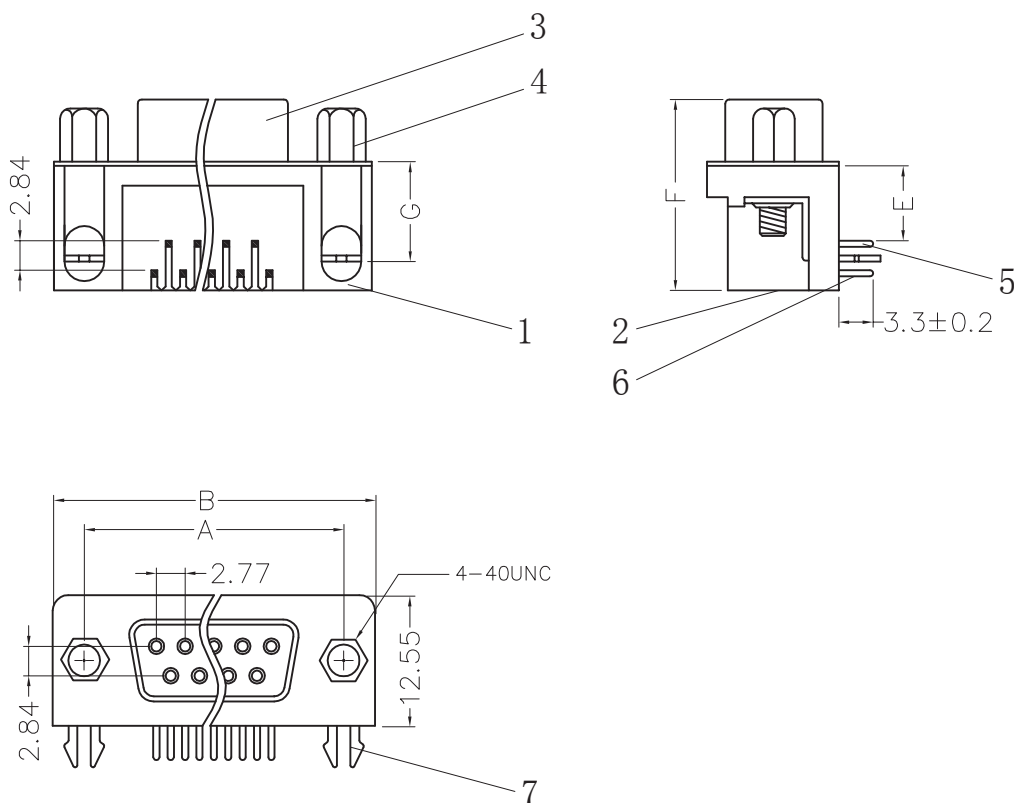
Operating Temperature: -55°C÷+105°C

Contact: Phosphor bronze

Housing: PBT &30% Glass Fiber(UL 94V-0)

Articolo	Position	A	B
05/06440-00	9	24.99	30.81
05/06442-00	15	33.32	39.20
05/06444-00	25	47.04	53.10

E	F	G
7.2	18.4	9.62
9.4	20.64	12.06
13.84	25.3	16.5



General Tolerance			
x.	±0.2	x."	±2°
.x	±0.1	.x°	±1°
.xx	±0.05	.xx°	±0.5°
.xxx	±0.01		

units: mm