

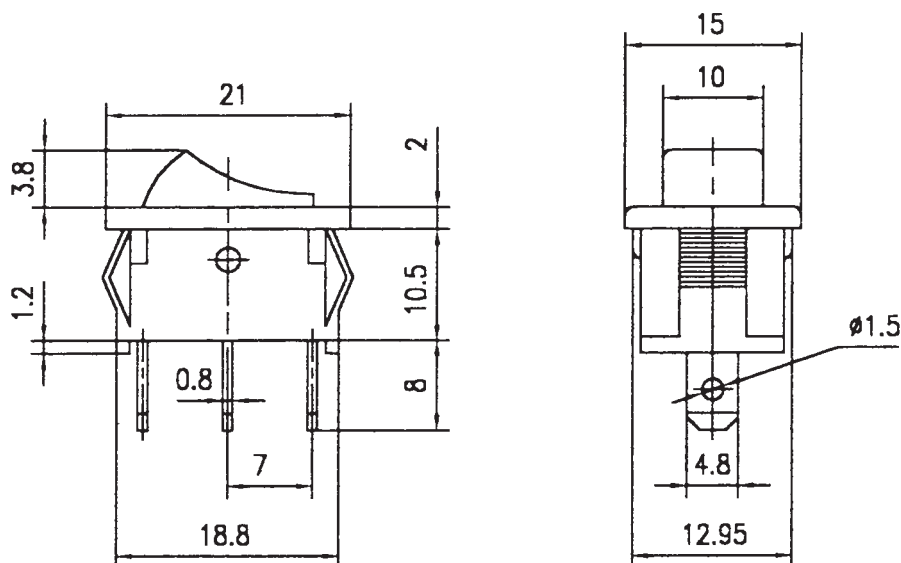
Miniature Rocker Switch

(TYPE): MRS-102A

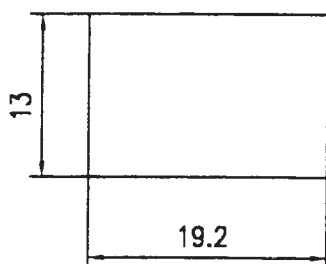
(Specification)

1. (Rating): 10A 125V AC ; 6A 250V AC
2. (Contact R): 35m Ω Max
3. (Insulation R): 500V DC 100M Ω min
4. (Dielectric Strength): 1 Minute 1500V AC
5. (Electrical Life): 10, 000 Cycles
6. (Operating Temperature): -30°C~+80°C

(Outline Drawing)



(P.C. Mounting)



(Circuitry)

