

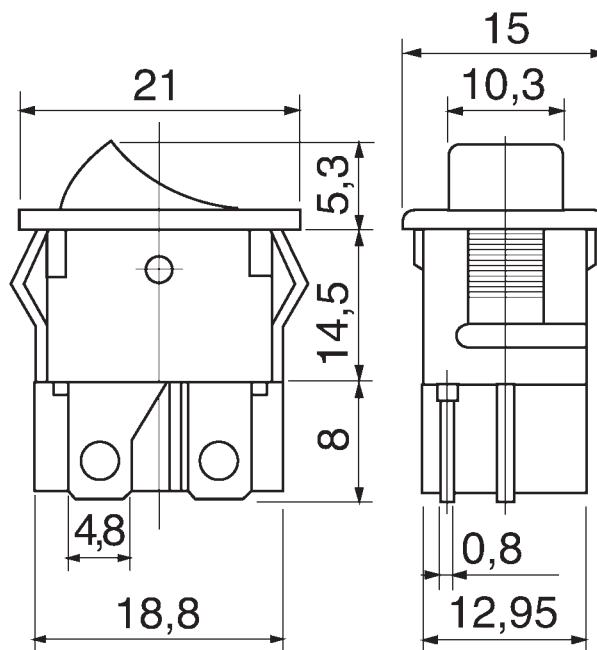
## Miniature Rocker Switch

(TYPE): MRS-101-2

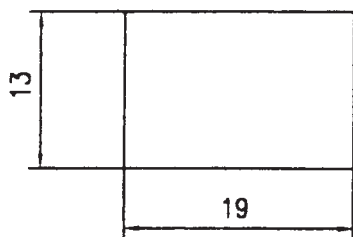
## (Specification)

1. (Rating): 10A 125V AC ; 6A 250V AC
2. (Contact R):  $35\text{m}\Omega$  Max
3. (Insulation R): 500V DC  $100\text{M}\Omega$  min
4. (Dielectric Strength): 1 Minute 1500V AC
5. (Electrical Life ): 10, 000 Cycles
6. (Operating Temperature):  $-30^{\circ}\text{C}\sim+80^{\circ}\text{C}$

## (Outline Drawing)



## (P.C. Mounting)



## (Circuitry)

