

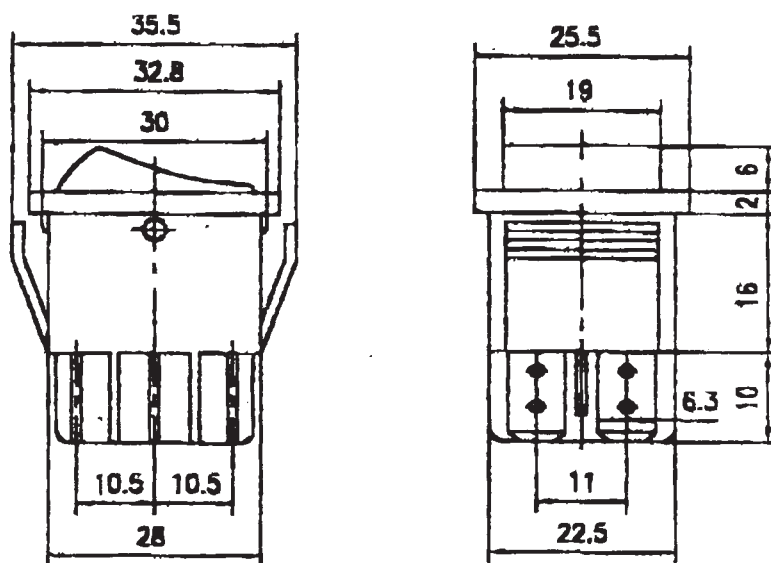
Double-poles Illuminated Rocker Switch

(TYPE): IRS-202-2C

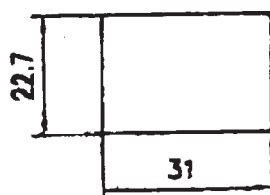
(Specification)

1. (Rating): 20A 125V AC : 15A 250V AC
2. (Contact R): 35m Ω Max
3. (Insulation R): 500V DC 100M Ω Min
4. (Dielectric Strength): 1 Minute 1500V AC
5. (Electrical Life): 10, 000 Cycles
6. (Operating Temperature): -30 $^{\circ}$ C ~ +80 $^{\circ}$ C

(Outline Drawing)



(P.C. Mounting)



(Circuitry)

