

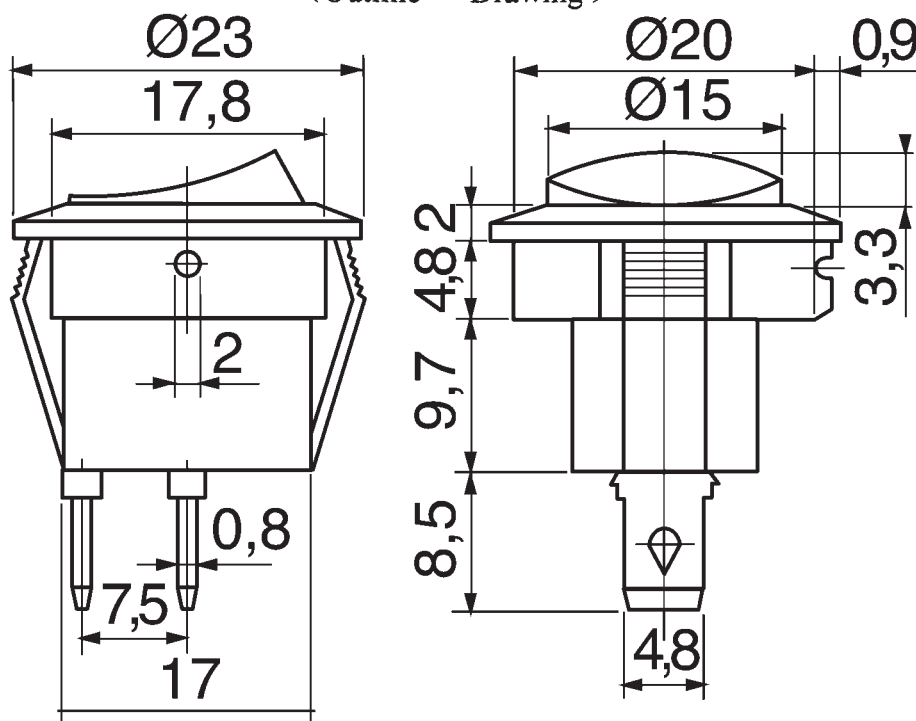
## Single-poles Rocker Switch

(TYPE): RS-101-8C

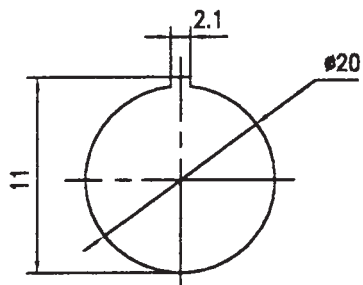
## (Specification)

1. (Rating): 13A 125V AC ; 6.5A 250V AC
2. (Contact R): 35mΩ Max
3. (Insulation R): 500V DC 100MΩ min
4. (Dielectric Strength): 1 Minute 1500V AC
5. (Electrical Life ): 10, 000 Cycles
6. (Operating Temperature): -30°C~+80°C

## (Outline Drawing)



## (P.C. Mounting)



## (Circuitry)

