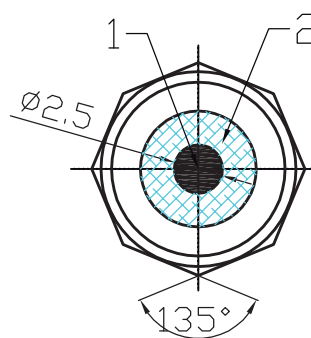
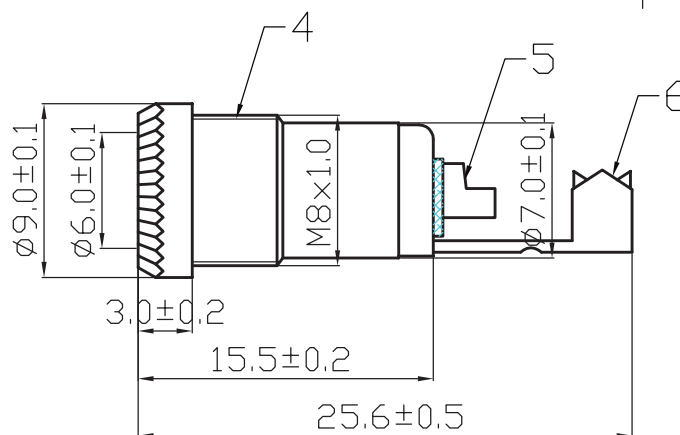
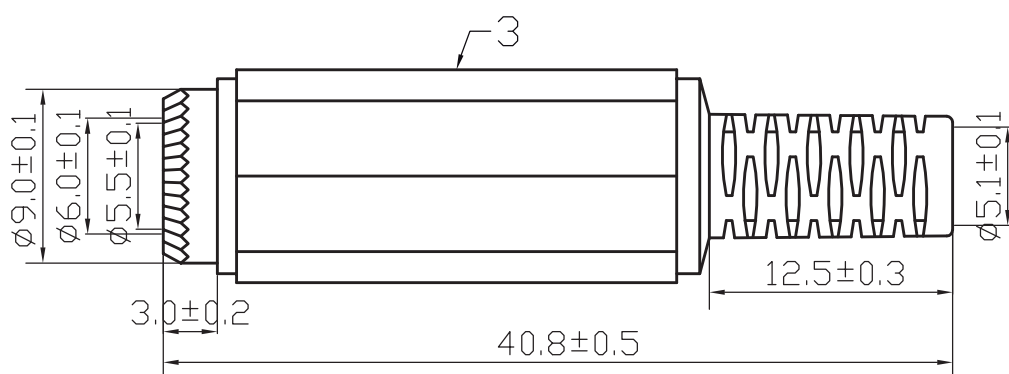


ART. 04/01310-00

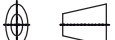


ART. 04/01312-00



ELECTRICAL CHARACTERISTIC

①	CONTACT RESISTANCE: $\leq 30m\Omega$	
②	INSULATION RESISTANCE: $\geq 2M\Omega$	
③	WITHSTAND VOLTAGE: DC100V	
④	CURRENT RATING: 0.5A/DC100V	
⑤	OPERATING TEMPERATURE: $-30^{\circ}C \sim 60^{\circ}C$	
6	CRIMPING PATCH	BRASS
5	SOLDERING PATCH	BRASS
4	BODY	BRASS
3	PLASTIC HANDLE	PVC

2	DIELECTRIC	POM	TOLERANCE		SIGNATURES		DATE			
1	PIN	BRASS	0 - 10 ±0.05 10 - 99 ±0.5 100 - 999 ±10.0 1000 - 9999 ±100.00 10000 - 99999 ±1000.00				05.12.29			
ITEM	DESIGNATION	MATERIAL								
REV	PART NO.& SAMPLE NO.		DATE	BY			APPROVAL:		TITLE	DC Jack W/Plastic Handle (2.1&2.5mm)
A					SHEET		SCALE	UNIT		
B					OF		1:1	mm	∅	CUSTOMER