

30/1031

## EH-280B26 NI-MH (SIZE): BUTTON CELL

Cell Dimension (With shrink sleeve)

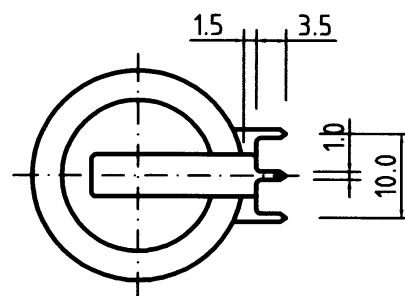
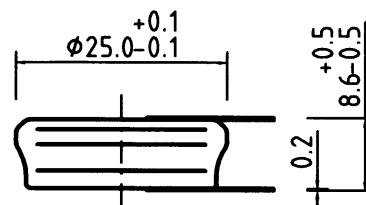
Diameter	25 ± 0.5 mm
Height	8.8 ± 0.5 mm
Approximate Weight	14 g

### Specifications

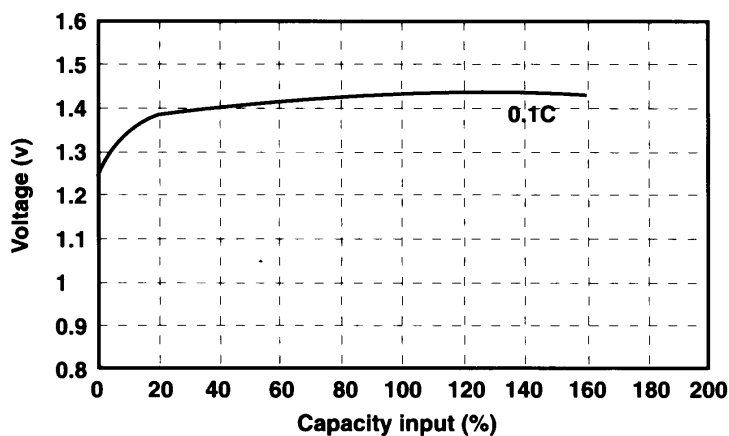
Nominal Voltage		1.2 V	
0.2C Discharge Capacity*		Typical **	295 mAh
		Nominal	280 mAh
Charge		Standard	28 mA for 14 to 16hr
		Fast	56 mA for 7 - 8 hr
Life Expectancy		500 cycles	
Operating Temperature	Charge	Standard	0°C to 40°C
		Fast	10°C to 30°C
	Discharge		-10°C to 40°C
	Storage	<6 months	0°C to 35°C
		<2 months	0°C to 45°C

\* After charging for 16 hr. with 0.1 C

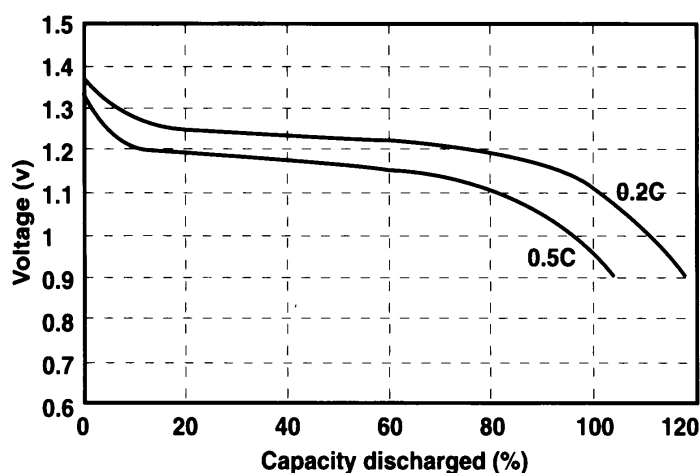
\*\* Average capacity



Charging curve of single cell EH-280B26 at 0.1C charging rate



Discharge curves of single cell EH-280B26 at various discharge rates at room temperature.



30/1032

## EH-280B26 NI-MH (SIZE): BUTTON CELL

Cell Dimension (With shrink sleeve)

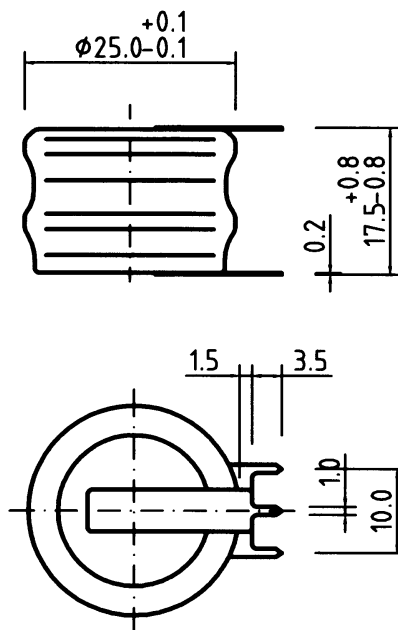
Diameter	25 ± 0.5 mm
Height	18 ± 0.5 mm
Approximate Weight	27 g

### Specifications

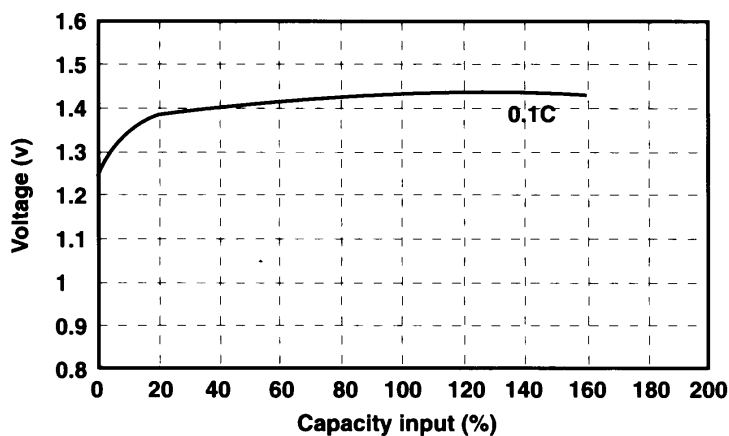
Nominal Voltage		2.4 V	
0.2C Discharge Capacity*		Typical **	295 mAh
		Nominal	280 mAh
Charge		Standard	28 mA for 14 to 16hr
		Fast	56 mA for 7 - 8 hr
Life Expectancy		500 cycles	
Operating Temperature	Charge	Standard	0°C to 40°C
		Fast	10°C to 30°C
	Discharge		-10°C to 40°C
	Storage	<6 months	0°C to 35°C
		<2 months	0°C to 45°C

\* After charging for 16 hr. with 0.1 C

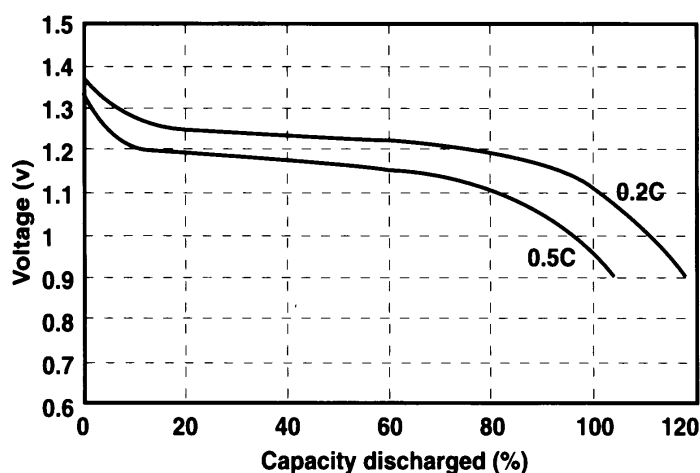
\*\* Average capacity



Charging curve of single cell EH-280B26 at 0.1C charging rate



Discharge curves of single cell EH-280B26 at various discharge rates at room temperature.



30/1033

## EH-280B26 NI-MH (SIZE): BUTTON CELL

Cell Dimension (With shrink sleeve)

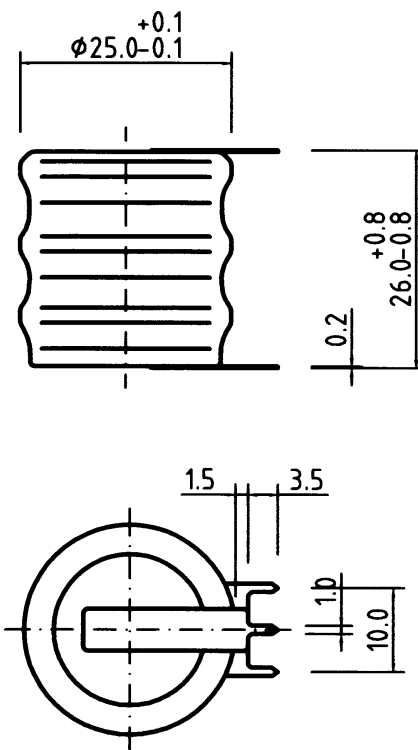
Diameter	25 ± 0.5 mm
Height	27 ± 0.5 mm
Approximate Weight	40 g

### Specifications

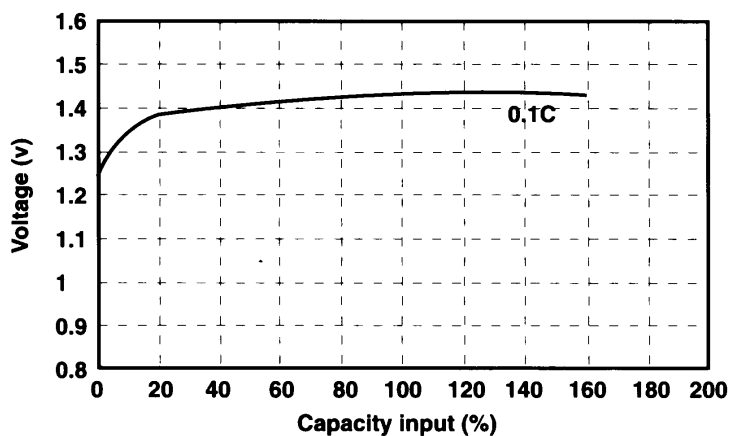
Nominal Voltage		3.6 V	
0.2C Discharge Capacity*		Typical **	295 mAh
		Nominal	280 mAh
Charge		Standard	28 mA for 14 to 16hr
		Fast	56 mA for 7 - 8 hr
Life Expectancy		500 cycles	
Operating Temperature	Charge	Standard	0°C to 40°C
		Fast	10°C to 30°C
	Discharge		-10°C to 40°C
	Storage	<6 months	0°C to 35°C
		<2 months	0°C to 45°C

\* After charging for 16 hr. with 0.1 C

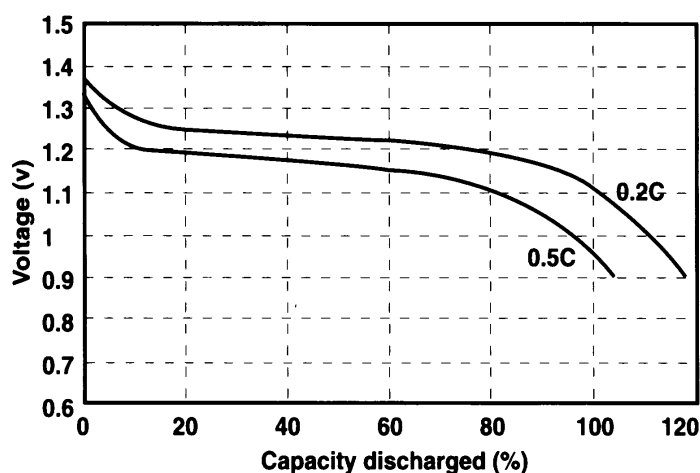
\*\* Average capacity



Charging curve of single cell EH-280B26 at 0.1C charging rate



Discharge curves of single cell EH-280B26 at various discharge rates at room temperature.



30/1034

## EH-280B26 NI-MH (SIZE): BUTTON CELL

Cell Dimension (With shrink sleeve)

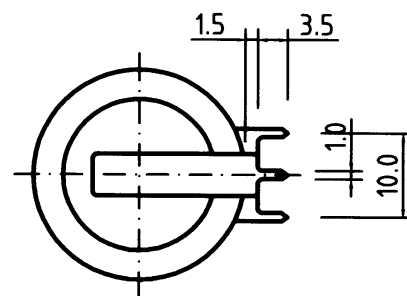
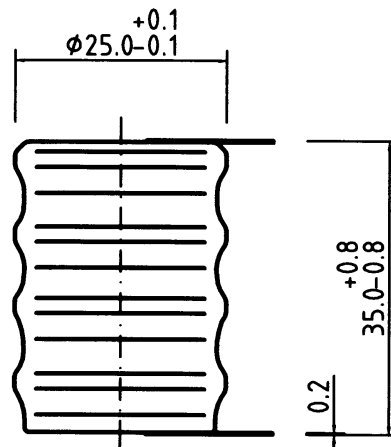
Diameter	25 ± 0.5 mm
Height	35 ± 0.5 mm
Approximate Weight	53 g

### Specifications

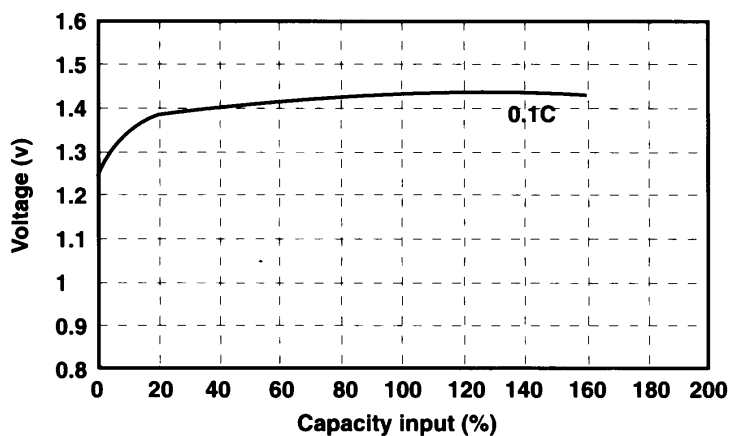
Nominal Voltage		4.8 V	
0.2C Discharge Capacity*		Typical **	295 mAh
		Nominal	280 mAh
Charge		Standard	28 mA for 14 to 16hr
		Fast	56 mA for 7 - 8 hr
Life Expectancy		500 cycles	
Operating Temperature	Charge	Standard	0°C to 40°C
		Fast	10°C to 30°C
	Discharge		-10°C to 40°C
	Storage	<6 months	0°C to 35°C
		<2 months	0°C to 45°C

\* After charging for 16 hr. with 0.1 C

\*\* Average capacity



Charging curve of single cell EH-280B26 at 0.1C charging rate



Discharge curves of single cell EH-280B26 at various discharge rates at room temperature.

