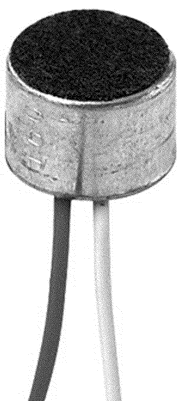


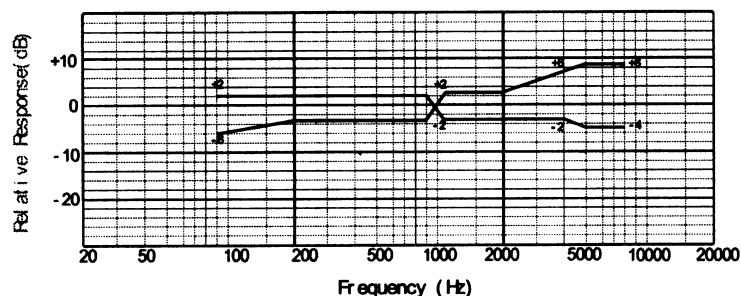
## ■ Appearance



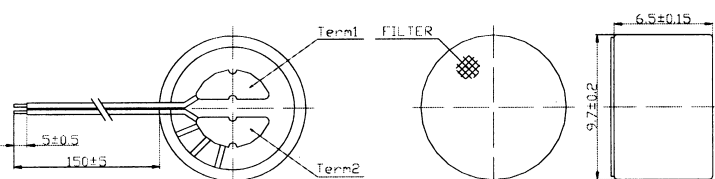
## ■ Sensitivity

 $-44 \pm 2\text{dB}$ 

## ■ Typical Frequency Response Curve



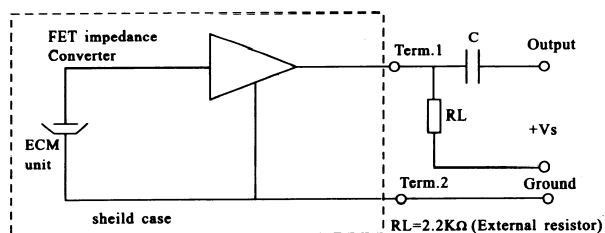
## ■ Dimensional Drawing



## ■ Std.Operating Conditions

 $V_s = 3\text{V}$ 
 $R_L = 2.2\text{k}\Omega$ 

## ■ Schematic Diagram



## ■ Specifications

Sensitivity:	$-44 \pm 2\text{dB}$
Impedance:	Less than $2.2\text{k}\Omega$
Directivity:	Omnidirectional
Standard operation voltage:	3V
Current consumption:	Max. 0.5mA
Sensitivity reduction:	Within - 3dB at 1.5V
S/N ratio:	More than 60dB