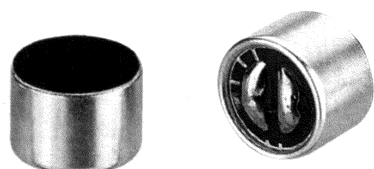
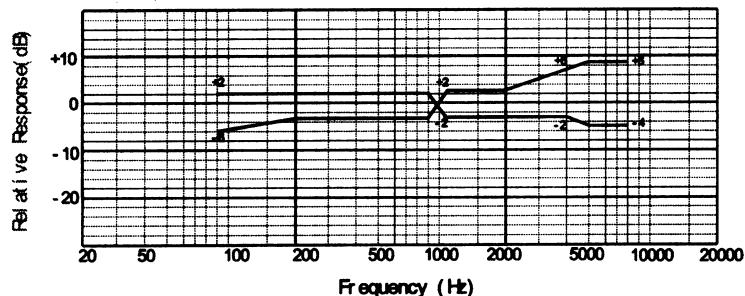


■ Appearance

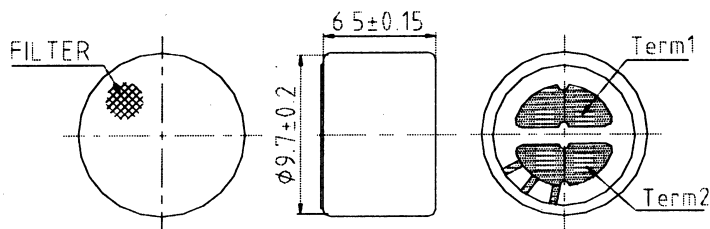


■ Sensitivity

$-46 \pm 2 \text{ dB}$



■ Dimensional Drawing

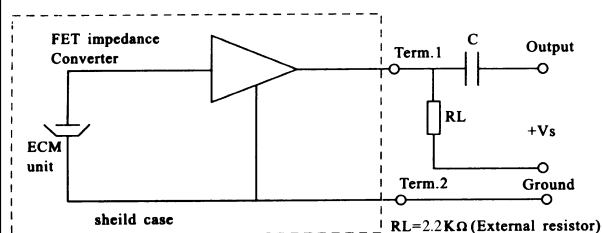


■ Std. Operating Conditions

$V_s = 4.5 \text{ V}$

$R_L = 2.2 \text{ k}\Omega$

■ Schematic Diagram



■ Specifications

Sensitivity: $-46 \pm 2 \text{ dB}$

Impedance: Less than $2.2 \text{ k}\Omega$

Directivity: Omnidirectional

Standard operation voltage: 4.5 V

Current consumption: Max. 0.5 mA

Sensitivity reduction: Within -3 dB at 1.5 V

S/N ratio: More than 60 dB